

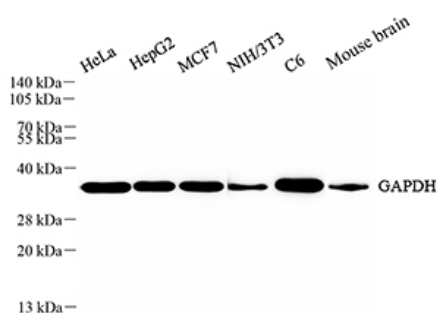


<b>Product name:</b>	GAPDH Rabbit Polyclonal Antibody
<b>Cat number:</b>	ABS11002
<b>Conjugate:</b>	unconjugated
<b>Host:</b>	Rabbit
<b>Size:</b>	100 µL
<b>Synonyms:</b>	GAPDH, GAPD, G3PD, HEL-S-162eP, glyceraldehyde-3-phosphate dehydrogenase
<b>Concentration:</b>	1mg/ml
<b>Isotype:</b>	IgG
<b>Immunogen:</b>	KLH conjugated Synthetic peptide corresponding to Mouse GAPDH
<b>Reactivity:</b>	Species, Human, Mouse, Rat
<b>Applications:</b>	Applications Dilution WB 1: 3000-1: 5000 IHC/IF 1: 500-1: 2000 ICC/IF 1: 500-1: 1000
<b>Molecular Weight:</b>	36 kDa / 36 kDa
<b>Purification:</b>	Affinity purification
<b>Background:</b>	Glyceraldehyde 3-phosphate dehydrogenase (abbreviated as GAPDH or less commonly as G3PDH) is an enzyme of ~37kDa that catalyzes the sixth step of glycolysis and thus serves to break down glucose for energy and carbon molecules. In addition to this long established metabolic function, GAPDH has recently been implicated in several non-metabolic processes, including transcription activation, initiation of apoptosis, ER to Golgi vesicle shuttling, and fast axonal, or axoplasmic transport. In sperm, a testis-specific isoenzyme GAPDHS is expressed.
<b>Form:</b>	Liquid
<b>Buffer:</b>	PBS with 0.02% sodium azide, 100µg/ml BSA and 50% glycerol.
<b>Storage:</b>	Store at -20 °C for one year. Avoid repeated freeze/ thaw cycles.

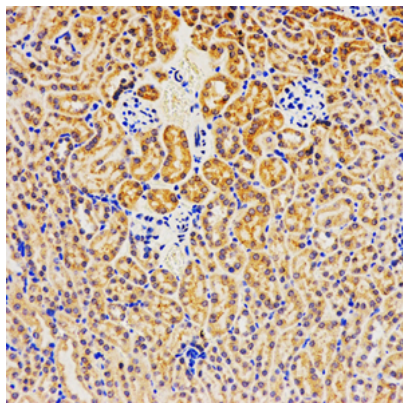
**For Research Use Only**

**IMMUNOLOGICAL SCIENCES**

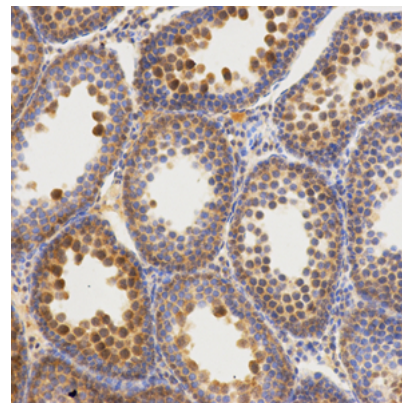
Web-site: <https://immunologicalsciences.com> - E-mail: [info@immunologicalsciences.com](mailto:info@immunologicalsciences.com)



WB analysis of GAPDH . Sample:  
Protein treated by RIPA Lysis Buffer .  
Blocking buffer: 3% Nonfat dry milk in  
TBST, RT, 1h. Primary antibody: 1:  
5000, 4°C overnight. Secondary  
antibody: HRP Goat Anti-Rabbit IgG , 1:  
5000, RT, 1h.



IHC analysis of GAPDH . Sample:  
Mouse kindey , 4% PFA 12-24h.  
Antigen retrieval: Citrate buffer ,98°C,20  
min. Blocking buffer: 3% BSA in PBS ,  
RT, 30min. Primary antibody: 1: 500,  
4°C overnight. Secondary antibody:  
HRP Goat Anti-Rabbit IgG , 1: 200 RT  
1h.



IHC analysis of GAPDH . Sample: Rat  
testis , 4% PFA 12-24h. Antigen  
retrieval: Citrate buffer ,98°C,20 min.  
Blocking buffer: 3% BSA in PBS , RT,  
30min. Primary antibody: 1: 500, 4°C  
overnight. Secondary antibody: HRP  
Goat Anti-Rabbit IgG , 1: 200 RT 1h.

**For Research Use Only  
IMMUNOLOGICAL SCIENCES**