

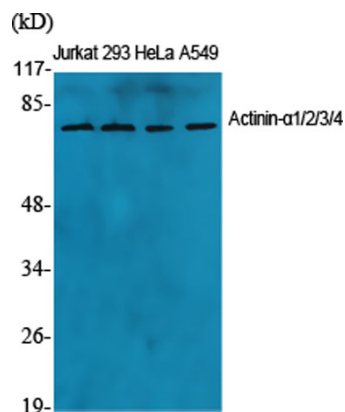


Product name:	Actinin- α 1/2/3/4 Rabbit Polyclonal Antibody
Cat number:	ABE1593
Conjugate:	unconjugated
Host:	Rabbit
Size:	100 ug
Synonyms:	ACTN1; Alpha-actinin-1; Alpha-actinin cytoskeletal isoform; F-actin cross-linking protein; Non-muscle alpha-actinin-1; ACTN2; Alpha-actinin-2; Alpha-actinin skeletal muscle isoform 2; F-actin cross-linking protein; ACTN3; Alpha-actinin-3; A
Clone:	Polyclonal
Concentration:	1 mg/ml
Isotype:	IgG
Immunogen:	The antiserum was produced against synthesized peptide derived from human ACTN1/2/3/4. AA range:21-70
Reactivity:	Human;Mouse;Rat
Applications:	Western Blot: 1/500 - 1/2000. Immunohistochemistry: 1/100 - 1/300. ELISA: 1/20000. Not yet tested in other applications.
Molecular Weight:	75kD
Purification:	The antibody was affinity-purified from rabbit antiserum by affinity-chromatography using epitope-specific immunogen
Background:	Alpha actinins belong to the spectrin gene superfamily which represents a diverse group of cytoskeletal proteins, including the alpha and beta spectrins and dystrophins. Alpha actinin is an actin-binding protein with multiple roles in different cell types. In nonmuscle cells, the cytoskeletal isoform is found along microfilament bundles and adherens-type junctions, where it is involved in binding actin to the membrane. In contrast, skeletal, cardiac, and smooth muscle isoforms are localized to the Z-disc and analogous dense bodies, where they help anchor the myofibrillar actin filaments. This gene encodes a nonmuscle, cytoskeletal, alpha actinin isoform and maps to the same site as the structurally similar erythroid beta spectrin gene. Three transcript variants encoding different isoforms have been found for this gene. [provided by RefSeq, Jul 2008],
Form:	liquid
Buffer:	Liquid in PBS containing 50% glycerol, 0.5%BSAand0.02% sodium azide.
Storage:	-20°C/1 year

For Research Use Only

IMMUNOLOGICAL SCIENCES

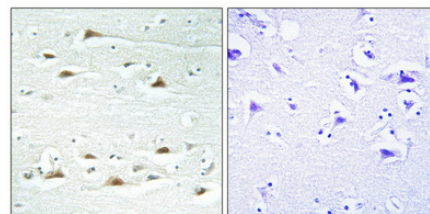
Web-site: <https://immunologicalsciences.com> - E-mail: info@immunologicalsciences.com



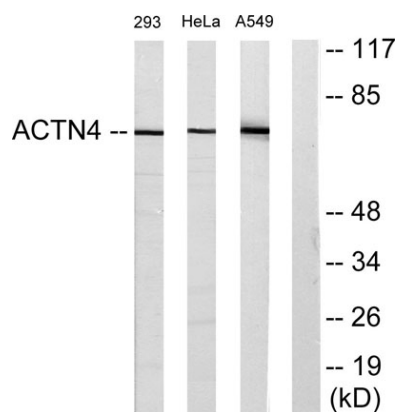
Western Blot analysis of various cells using Actinin- α 1/2/3/4 Polyclonal Antibody diluted at 1:1000



Western Blot analysis of A549 cells using Actinin- α 1/2/3/4 Polyclonal Antibody diluted at 1:1000



Immunohistochemical analysis of paraffin-embedded Human brain. Antibody was diluted at 1:100(4° overnight). High-pressure and temperature Tris-EDTA, pH8.0 was used for antigen retrieval. Negative control (right) obtained from antibody was pre-absorbed by i



Western blot analysis of lysates from 293, HeLa, and A549 cells, using ACTN1/2/3/4 Antibody. The lane on the right is blocked with the synthesized peptide.

For Research Use Only

IMMUNOLOGICAL SCIENCES

Web-site: <https://immunologicalsciences.com> - E-mail: info@immunologicalsciences.com