

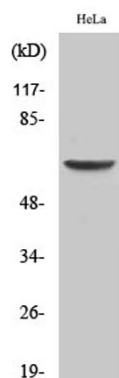


Product name:	EAAT1 Rabbit Polyclonal Antibody
Cat number:	ABE2216
Conjugate:	unconjugated
Host:	Rabbit
Size:	100 ug
Synonyms:	SLC1A3; EAAT1; GLAST; GLAST1; Excitatory amino acid transporter 1; Sodium-dependent glutamate/aspartate transporter 1; GLAST-1; Solute carrier family 1 member 3
Clone:	Polyclonal
Concentration:	1 mg/ml
Isotype:	IgG
Immunogen:	The antiserum was produced against synthesized peptide derived from human EAAT1. AA range:492-541
Reactivity:	Human;Rat;Mouse;
Applications:	Western Blot: 1/500 - 1/2000. ELISA: 1/10000. Not yet tested in other applications.
Molecular Weight:	65kD
Purification:	The antibody was affinity-purified from rabbit antiserum by affinity-chromatography using epitope-specific immunogen.
Background:	This gene encodes a member of a member of a high affinity glutamate transporter family. This gene functions in the termination of excitatory neurotransmission in central nervous system. Mutations are associated with episodic ataxia, Type 6. Alternative splicing results in multiple transcript variants.[provided by RefSeq, Feb 2014],
Form:	liquid
Buffer:	Liquid in PBS containing 50% glycerol, 0.5%BSAand0.02% sodium azide.
Storage:	-20°C/1 year

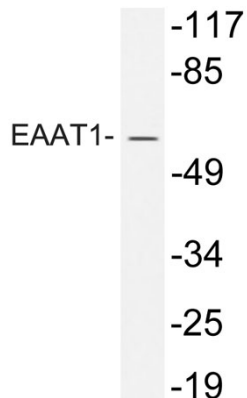
For Research Use Only

IMMUNOLOGICAL SCIENCES

Web-site: <https://immunologicalsciences.com> - E-mail: info@immunologicalsciences.com



Western Blot analysis of various cells
using EAAT1 Polyclonal Antibody



Western blot analysis of lysate from
HeLa cells, using EAAT1 antibody.

For Research Use Only

IMMUNOLOGICAL SCIENCES

Web-site: <https://immunologicalsciences.com> - E-mail: info@immunologicalsciences.com