

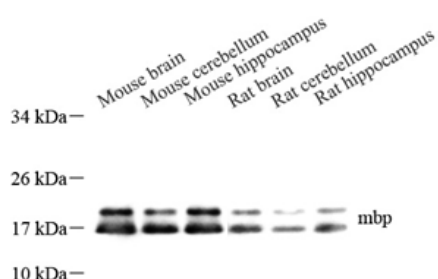


Product name:	Anti-Myelin Basic Protein Rabbit Polyclonal Antibody
Cat number:	ABS11226
Conjugate:	unconjugated
Host:	Rabbit
Size:	100 µL
Synonyms:	MBP, entrez:4155, myelin basic protein
Concentration:	1mg/ml
Isotype:	IgG
Immunogen:	KLH conjugated Synthetic peptide corresponding to Mouse Myelin Basic Protein
Reactivity:	Mouse, Rat
Applications:	Western Blot: 1: 500-1: 1000 Immunohistochemistry: 1: 300-1: 600 Immunofluorescence: 1: 300-1: 600
Molecular Weight:	17/20 kDa
Purification:	Affinity purification
Background:	The classic group of MBP isoforms (isoform 4-isoform 13) are with PLP the most abundant protein components of the myelin membrane in the CNS. They have a role in both its formation and stabilization. The non-classic group of MBP isoforms (isoform 1-isoform 3/Golli-MBPs) may preferentially have a role in the early developing brain long before myelination, maybe as components of transcriptional complexes, and may also be involved in signaling pathways in T-cells and neural cells. Differential splicing events combined to optional post-translational modifications give a wide spectrum of isomers, with each of them potentially having a specialized function.
Form:	Liquid
Buffer:	PBS with 0.02% sodium azide, 100 µg/ml BSA and 50% glycerol.
Storage:	Store at -20 °C for one year. Avoid repeated freeze/ thaw cycles.

For Research Use Only

IMMUNOLOGICAL SCIENCES

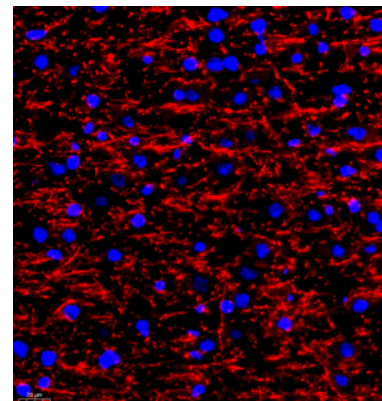
Web-site: <https://immunologicalsciences.com> - E-mail: info@immunologicalsciences.com



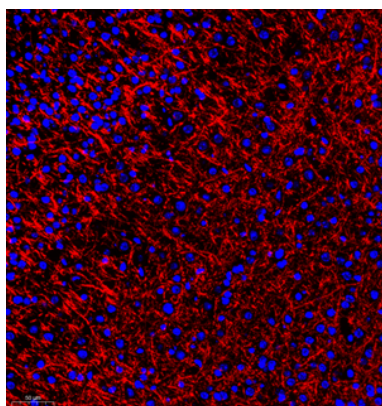
WB analysis of Myelin Basic Protein .
Sample: Protein treated by RIPA Lysis Buffer . Blocking buffer: 3% Nonfat dry milk in TBST, RT, 1h. Primary antibody: 1: 1000, 4°C overnight. Secondary antibody: HRP Goat Anti-Rabbit IgG , 1: 3000, RT, 1h.



IHC analysis of MBP . Sample: Rat striatum , 4% PFA 12-24h. Antigen retrieval: Citrate buffer ,98°C,20 min. Blocking buffer: 3% BSA in PBS , RT, 30min. Primary antibody: 1: 600, 4°C overnight. Secondary antibody: HRP Goat Anti-Rabbit IgG , 1: 200 RT 1h.



IF analysis of MBP . Sample: Rat brain , 4% PFA 12-24h. Antigen retrieval: Citrate buffer ,98°C,20 min. Blocking buffer: 3% BSA in PBS , RT, 30min. Primary antibody: 1: 300, 4°C overnight. Secondary antibody: Cy3 conjugated Goat Anti-Rabbit IgG , 1: 300 RT, 1h.



IF analysis of MBP . Sample: Mouse brain , 4% PFA 12-24h. Antigen retrieval: Citrate buffer ,98°C,20 min. Blocking buffer: 3% BSA in PBS , RT, 30min. Primary antibody: 1: 300, 4°C overnight. Secondary antibody: Cy3 conjugated Goat Anti-Rabbit IgG , 1: 300 RT, 1h.

For Research Use Only
IMMUNOLOGICAL SCIENCES