

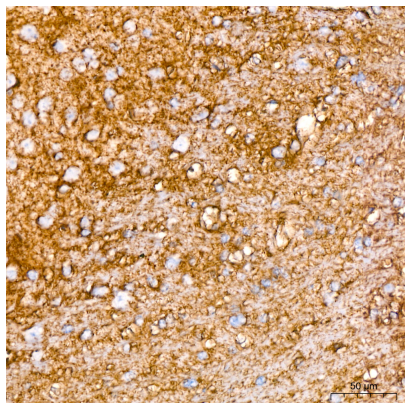


| | |
|--------------------------|--|
| Product name: | EAAT1/SLC1A3 Rabbit Monoclonal Antibody |
| Cat number: | MAB9712 |
| Conjugate: | Unconjugated |
| Host: | Rabbit |
| Size: | 100 ug |
| Synonyms: | EA6; EAAT1; GLAST; GLAST1; EAAT1/SLC1A3 |
| Clone: | ARC1714 |
| Concentration: | 1mg/ml |
| Isotype: | IgG |
| Immunogen: | Synthetic peptide. This information is considered to be commercially sensitive. |
| Reactivity: | Mouse,Rat |
| Applications: | WB 1:500 - 1:2000 IHC-P 1:200 - 1:2000 IF/ICC 1:200 - 1:800 ELISA Recommended starting concentration is 1 µg/mL. Please optimize the concentration based on your specific assay requirements. |
| Molecular Weight: | 50-55kDa/90-130kDa |
| Purification: | Affinity purification |
| Background: | This gene encodes a member of a member of a high affinity glutamate transporter family. This gene functions in the termination of excitatory neurotransmission in central nervous system. Mutations are associated with episodic ataxia, Type 6. Alternative splicing results in multiple transcript variants. |
| Form: | liquid |
| Buffer: | PBS with 0.02% sodium azide,0.05% BSA,50% glycerol,pH7.3. |
| Storage: | Store at -20°C. Avoid freeze / thaw cycles. |

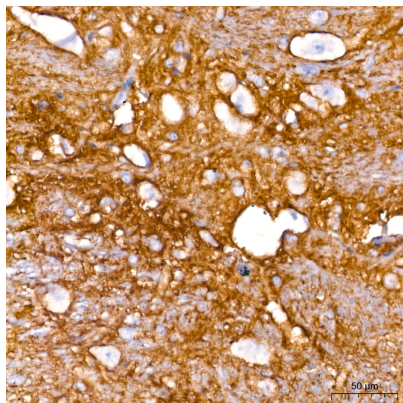
For Research Use Only

IMMUNOLOGICAL SCIENCES

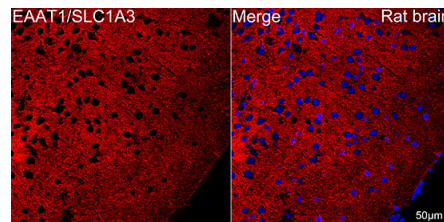
Web-site: <https://immunologicalsciences.com> - E-mail: info@immunologicalsciences.com



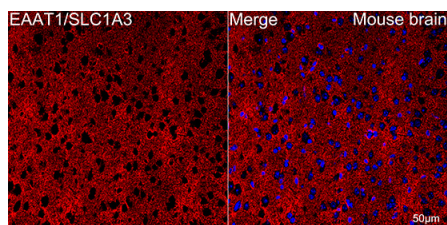
Immunohistochemistry analysis of paraffin-embedded Mouse brain tissue using EAAT1/SLC1A3 Rabbit mAb at a dilution of 1:200 (40x lens). High pressure antigen retrieval performed with 0.01M Citrate buffer (pH 6.0) prior to IHC staining.



Immunohistochemistry analysis of paraffin-embedded Rat brain tissue using EAAT1/SLC1A3 Rabbit mAb at a dilution of 1:200 (40x lens). High pressure antigen retrieval performed with 0.01M Citrate buffer (pH 6.0) prior to IHC staining.



Confocal imaging of paraffin-embedded Rat brain tissue using EAAT1/SLC1A3 Rabbit mAb (dilution 1:200) followed by a further incubation with Cy3 Goat Anti-Rabbit IgG (H+L) (dilution 1:500) (Red). DAPI was used for nuclear staining (Blue). Objective: 40x. Perform microwave antigen retrieval with 0.01 M citrate buffer (pH 6.0) prior to IF staining.



Confocal imaging of paraffin-embedded Mouse brain tissue using EAAT1/SLC1A3 Rabbit mAb (dilution 1:200) followed by a further incubation with Cy3 Goat Anti-Rabbit IgG (H+L) (dilution 1:500) (Red). DAPI was used for nuclear staining (Blue). Objective: 40x. Perform microwave antigen retrieval with 0.01 M citrate buffer (pH 6.0) prior to IF staining.

For Research Use Only
IMMUNOLOGICAL SCIENCES