



<b>Product name:</b>	Recombinant Anti-beta Actin Rabbit Monoclonal Antibody
<b>Cat number:</b>	MABS15003
<b>Conjugate:</b>	unconjugated
<b>Host:</b>	Rabbit
<b>Size:</b>	100 µL
<b>Synonyms:</b>	ACTB, BRWS1, PS1TP5BP1, Beta-actin, actin beta, Beta CytoskeletalActin, β-Actin
<b>Concentration:</b>	1mg/ml
<b>Isotype:</b>	IgG
<b>Immunogen:</b>	KLH conjugated synthetic peptide corresponding to Mouse beta-Actin
<b>Reactivity:</b>	Species, Human, Mouse, Rat, Pg, Ch, Bv, Sh, Gt, Mk, Rb, Ta, Frog, Human, Mouse, Rat
<b>Applications:</b>	Applications Dilution WB 1: 3000-1: 5000 IHC/IF 1: 500-1: 1000 ICC/IF 1: 300-1: 1000
<b>Molecular Weight:</b>	42 kDa / 42 kDa
<b>Purification:</b>	Affinity purification
<b>Background:</b>	Actins are highly conserved proteins that are involved in various types of cell motility and are ubiquitously expressed in all eukaryotic cells. In vertebrates 3 main groups of actin isoforms, alpha, beta and gamma have been identified. The alpha actins are found in muscle tissues and are a major constituent of the contractile apparatus. The beta and gamma actins coexist in most cell types as components of the cytoskeleton and as mediators of internal cell motility.
<b>Form:</b>	Liquid
<b>Buffer:</b>	PBS with 0.02% sodium azide, 100 µg/ml BSA and 50% glycerol.
<b>Storage:</b>	Store at -20 °C for one year. Avoid repeated freeze/thaw cycles.

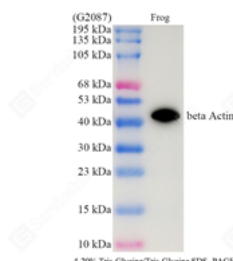
**For Research Use Only**

**IMMUNOLOGICAL SCIENCES**

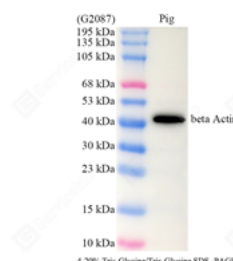
Web-site: <https://immunologicalsciences.com> - E-mail: [info@immunologicalsciences.com](mailto:info@immunologicalsciences.com)



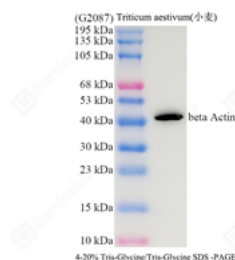
WB analysis of beta Actin . Sample:  
Protein treated by RIPA Lysis Buffer .  
Blocking buffer: 3% Nonfat dry milk in  
TBST, RT, 1h. Primary antibody: 1:  
5000, 4°C overnight. Secondary  
antibody: HRP Goat Anti-Rabbit IgG , 1:  
5000, RT, 1h.



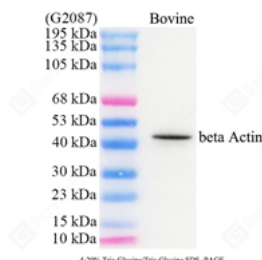
WB analysis of beta Actin . Sample:  
Protein treated by RIPA Lysis Buffer .  
Blocking buffer: 3% Nonfat dry milk in  
TBST, RT, 1h. Primary antibody: 1:  
5000, 4°C overnight. Secondary  
antibody: HRP Goat Anti-Rabbit IgG , 1:  
5000, RT, 1h.



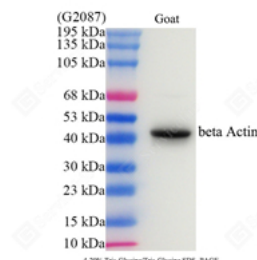
WB analysis of beta Actin . Sample:  
Protein treated by RIPA Lysis Buffer .  
Blocking buffer: 3% Nonfat dry milk in  
TBST, RT, 1h. Primary antibody: 1:  
5000, 4°C overnight. Secondary  
antibody: HRP Goat Anti-Rabbit IgG , 1:  
5000, RT, 1h.



WB analysis of beta Actin . Sample:  
Protein treated by RIPA Lysis Buffer .  
Blocking buffer: 3% Nonfat dry milk in  
TBST, RT, 1h. Primary antibody: 1:  
5000, 4°C overnight. Secondary  
antibody: HRP Goat Anti-Rabbit IgG , 1:  
5000, RT, 1h.



WB analysis of beta Actin . Sample:  
Protein treated by RIPA Lysis Buffer .  
Blocking buffer: 3% Nonfat dry milk in  
TBST, RT, 1h. Primary antibody: 1:  
3000, 4°C overnight. Secondary  
antibody: HRP Goat Anti-Rabbit IgG , 1:  
5000, RT, 1h.

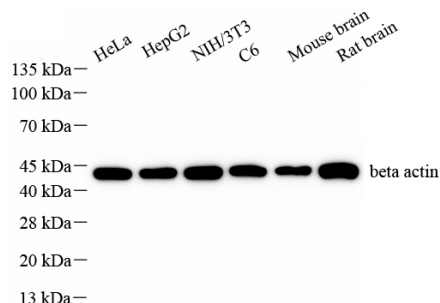


WB analysis of beta Actin . Sample:  
Protein treated by RIPA Lysis Buffer .  
Blocking buffer: 3% Nonfat dry milk in  
TBST, RT, 1h. Primary antibody: 1:  
3000, 4°C overnight. Secondary  
antibody: HRP Goat Anti-Rabbit IgG , 1:  
5000, RT, 1h.

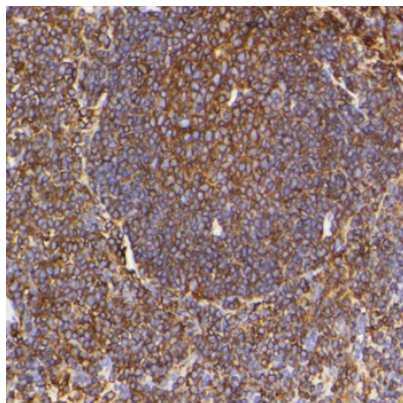
**For Research Use Only**  
**IMMUNOLOGICAL SCIENCES**



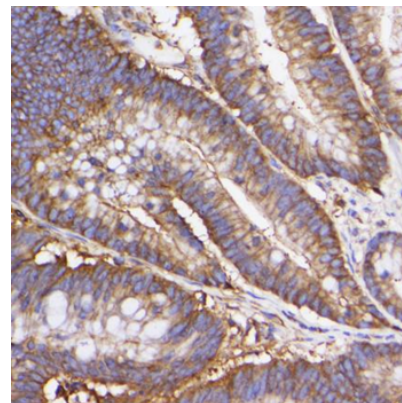
**Product Data Sheet**  
**Recombinant Anti-beta Actin Rabbit Monoclonal**  
**Antibody**



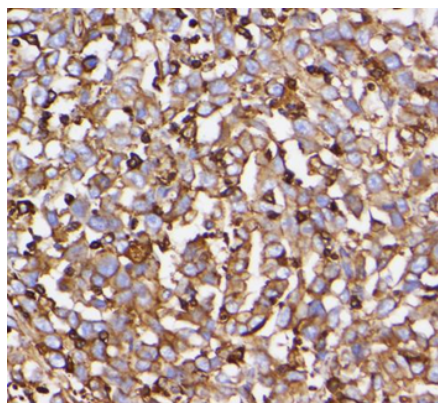
WB analysis of beta Actin . Sample:  
Protein treated by RIPA Lysis Buffer .  
Blocking buffer: 3% Nonfat dry milk in  
TBST, RT, 1h. Primary antibody: 1:  
5000, 4°C overnight. Secondary  
antibody: HRP Goat Anti-Rabbit IgG , 1:  
5000, RT, 1h.



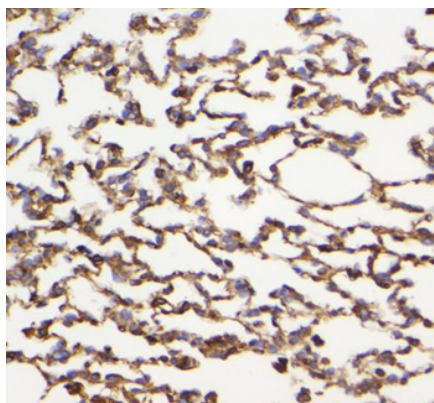
Immunohistochemistry of paraffin  
embedded mouse spleen using  
beta-Actin at dilution of 1: 1000



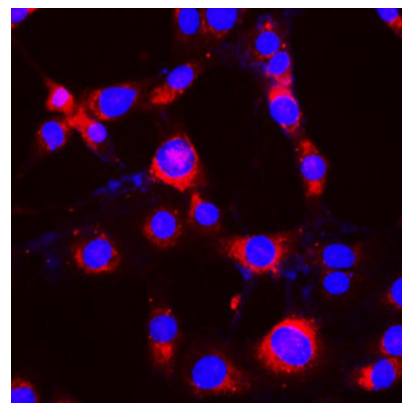
Immunohistochemistry of paraffin  
embedded human colon cancer using  
beta-Actin at dilution of 1: 1000



Immunohistochemistry of paraffin  
embedded human lung cancer using  
beta-Actin at dilution of 1: 1000

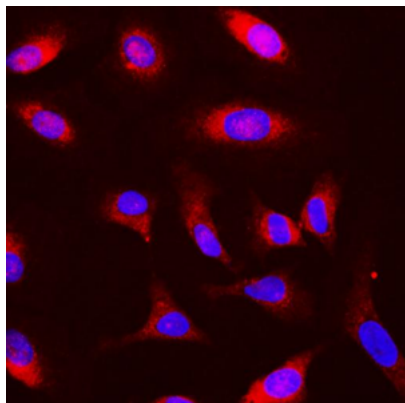


Immunohistochemistry of paraffin  
embedded rat lung using beta-Actin at  
dilution of 1: 1000



Immunocytochemistry analysis of 4%  
paraformaldehyde fixed NIH/3T3 cells  
using  $\beta$ -Actin at dilution of 1: 1000

**For Research Use Only**  
**IMMUNOLOGICAL SCIENCES**



Immunocytochemistry analysis of 4%  
paraformaldehyde fixed HeLa cells  
using  $\beta$ -Actin at dilution of 1: 1000

**For Research Use Only  
IMMUNOLOGICAL SCIENCES**

Web-site: <https://immunologicalsciences.com> - E-mail: [info@immunologicalsciences.com](mailto:info@immunologicalsciences.com)