

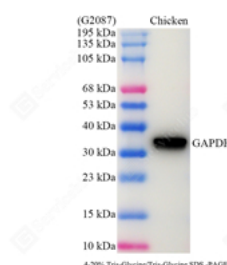


<b>Product name:</b>	Anti-GAPDH Mouse Monoclonal Antibody
<b>Cat number:</b>	MABS15002
<b>Conjugate:</b>	Unconjugated
<b>Host:</b>	Rabbit
<b>Size:</b>	1ml
<b>Synonyms:</b>	GAPDH, GAPD, G3PD, HEL-S-162eP, glyceraldehyde-3-phosphate dehydrogenase
<b>Clone:</b>	6C5
<b>Concentration:</b>	200ug/ml
<b>Isotype:</b>	IgG1
<b>Immunogen:</b>	KLH conjugated synthetic peptide corresponding to Mouse GAPDH
<b>Reactivity:</b>	Human, Mouse, Rat, Pg, Ch, Bv, Sh, Gt, Mk, Rb, Ta, Frog, Human, Mouse, Rat
<b>Applications:</b>	Western Blot 1: 3000-1: 5000 IHC/IF 1: 1000-1: 3000 ICC/IF 1: 1000-1: 2000
<b>Molecular Weight:</b>	36 kDa / 36 kDa
<b>Purification:</b>	Affinity purification
<b>Background:</b>	Glyceraldehyde 3-phosphate dehydrogenase (abbreviated as GAPDH or less commonly as G3PDH) is an enzyme of ~37kDa that catalyzes the sixth step of glycolysis and thus serves to break down glucose for energy and carbon molecules. In addition to this long established metabolic function, GAPDH has recently been implicated in several non-metabolic processes, including transcription activation, initiation of apoptosis, ER to Golgi vesicle shuttling, and fast axonal, or axoplasmic transport.
<b>Form:</b>	Liquid
<b>Buffer:</b>	PBS with 0.02% sodium azide, 100 µg/ml BSA and 50% glycerol.
<b>Storage:</b>	Store at -20 °C for one year. Avoid repeated freeze/thaw cycles.

**For Research Use Only**

**IMMUNOLOGICAL SCIENCES**

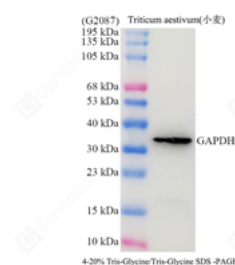
Web-site: <https://immunologicalsciences.com> - E-mail: [info@immunologicalsciences.com](mailto:info@immunologicalsciences.com)



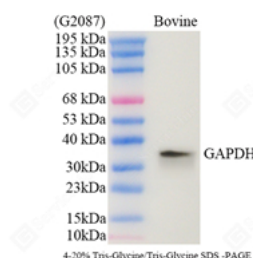
WB analysis of GAPDH . Sample:  
Protein treated by RIPA Lysis Buffer .  
Blocking buffer: 3% Nonfat dry milk  
inTBST,RT,1h. Primaryantibody:1:  
5000,4°C overnight.  
Secondaryantibody: HRP Goat  
Anti-Mouse IgG , 1: 5000, RT, 1h.



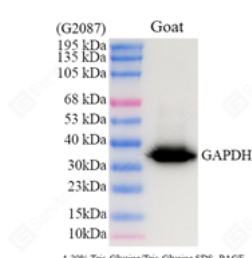
WB analysis of GAPDH . Sample:  
Protein treated by RIPA Lysis Buffer .  
Blocking buffer: 3% Nonfat dry milk  
inTBST,RT,1h. Primaryantibody:1:  
5000,4°C overnight.  
Secondaryantibody: HRP Goat  
Anti-Mouse IgG , 1: 5000, RT, 1h.



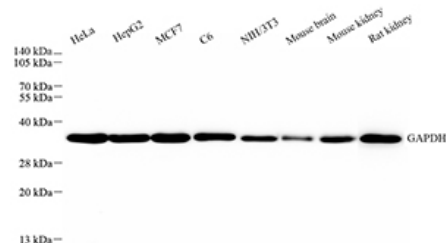
WB analysis of GAPDH . Sample:  
Protein treated by RIPA Lysis Buffer .  
Blocking buffer: 3% Nonfat dry milk  
inTBST,RT,1h. Primaryantibody:1:  
5000,4°C overnight.  
Secondaryantibody: HRP Goat  
Anti-Mouse IgG , 1: 5000, RT, 1h.



WB analysis of GAPDH . Sample:  
Protein treated by RIPA Lysis Buffer .  
Blocking buffer: 3% Nonfat dry milk  
inTBST,RT,1h. Primaryantibody:1:  
3000,4°C overnight.  
Secondaryantibody: HRP Goat  
Anti-Mouse IgG , 1: 5000, RT, 1h.

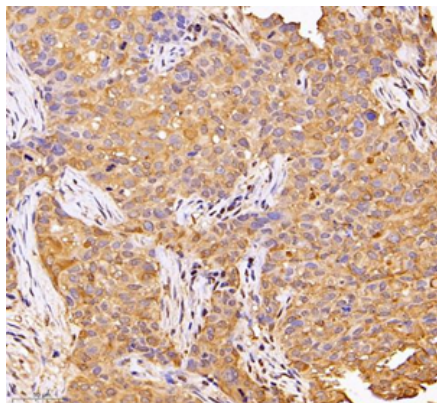


WB analysis of GAPDH . Sample:  
Protein treated by RIPA Lysis Buffer .  
Blocking buffer: 3% Nonfat dry milk  
inTBST,RT,1h. Primaryantibody:1:  
3000,4°C overnight.  
Secondaryantibody: HRP Goat  
Anti-Mouse IgG , 1: 5000, RT, 1h.

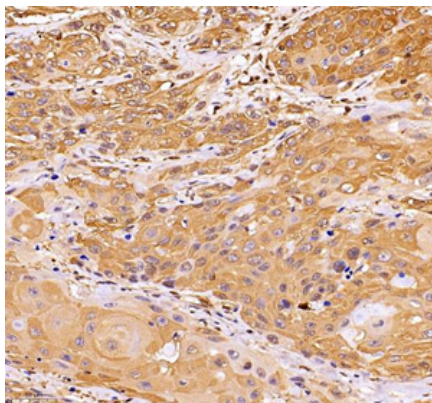


WB analysis of GAPDH . Sample:  
Protein treated by RIPA Lysis Buffer .  
Blocking buffer: 3% Nonfat dry milk  
inTBST,RT,1h. Primaryantibody:1:  
5000,4°C overnight.  
Secondaryantibody: HRP Goat  
Anti-Mouse IgG , 1: 5000, RT, 1h.

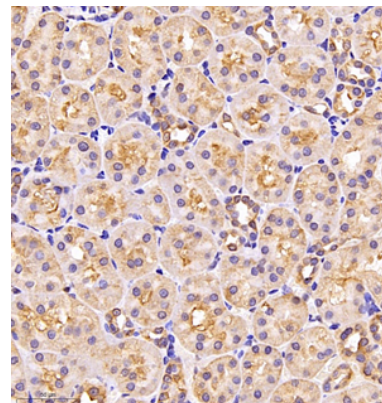
**For Research Use Only**  
**IMMUNOLOGICAL SCIENCES**



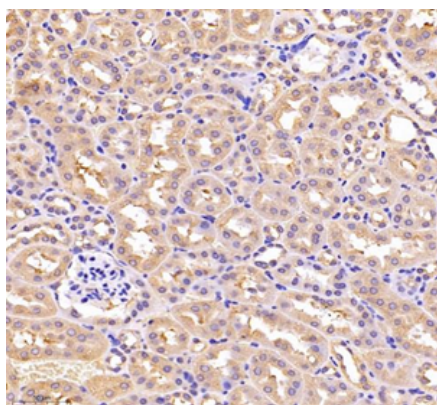
IHC analysis of GAPDH . Sample:  
Human breast carcinoma , 4% PFA  
12-24h. Antigen retrieval: Citrate buffer  
, pressure cooker 2min. Blocking buffer:  
3% BSA in PBS , RT, 30min. Primary  
antibody: 1: 1000, 4°C overnight.  
Secondary antibody: HRP Goat  
Anti-Mouse IgG , 1: 200 RT 1h.



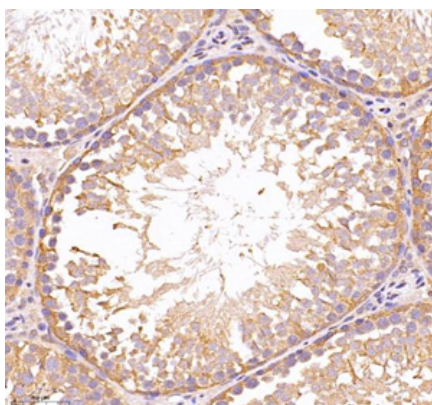
IHC analysis of GAPDH . Sample:  
Human esophageal cancer , 4% PFA  
12-24h. Antigen retrieval: Citrate buffer  
, pressure cooker 2min. Blocking buffer:  
3% BSA in PBS , RT, 30min. Primary  
antibody: 1: 1000, 4°C overnight.  
Secondary antibody: HRP Goat  
Anti-Mouse IgG , 1: 200 RT 1h.



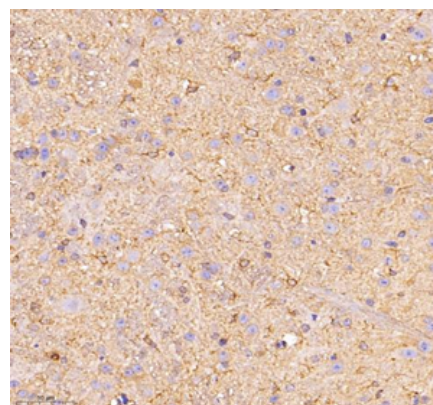
IHC analysis of GAPDH . Sample:  
Mouse kidney , 4% PFA 12-24h.  
Antigen retrieval: Citrate buffer ,  
pressure cooker 2min. Blocking buffer:  
3% BSA in PBS , RT, 30min. Primary  
antibody: 1: 1000, 4°C overnight.  
Secondary antibody: HRP Goat  
Anti-Mouse IgG , 1: 200 RT 1h.



IHC analysis of GAPDH . Sample: Rat  
kidney , 4% PFA 12-24h. Antigen  
retrieval: Citrate buffer , pressure  
cooker 2min. Blocking buffer: 3% BSA  
in PBS , RT, 30min. Primary antibody:  
1: 1000, 4°C overnight. Secondary  
antibody: HRP Goat Anti-Mouse IgG , 1:  
200 RT 1h.

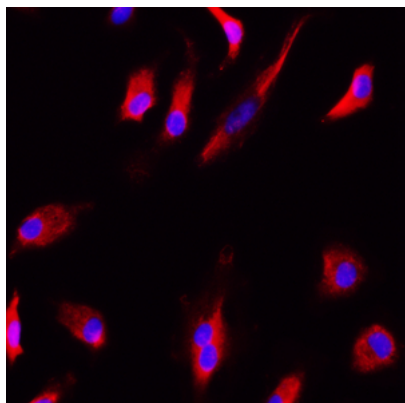


IHC analysis of GAPDH . Sample:  
Mouse testis , 4% PFA 12-24h. Antigen  
retrieval: Citrate buffer , pressure  
cooker 2min. Blocking buffer: 3% BSA  
in PBS , RT, 30min. Primary antibody:  
1: 1000, 4°C overnight. Secondary  
antibody: HRP Goat Anti-Mouse IgG , 1:  
200 RT 1h.



IHC analysis of GAPDH . Sample: Rat  
spinal cord , 4% PFA 12-24h. Antigen  
retrieval: Citrate buffer , pressure  
cooker 2min. Blocking buffer: 3% BSA  
in PBS , RT, 30min. Primary antibody:  
1: 1000, 4°C overnight. Secondary  
antibody: HRP Goat Anti-Mouse IgG , 1:  
200 RT 1h.

**For Research Use Only  
IMMUNOLOGICAL SCIENCES**



ICC analysis of GAPDH red. Sample:  
HeLa, 4% PFA 20min. Blocking buffer:  
3% BSA in PBS , RT, 30min. Primary  
antibody: 1: 1000, 4°C overnight.  
Secondary antibody Cy3 conjugated  
Goat Anti-Mouse IgG , 1: 300, RT, 1h.

**For Research Use Only**  
**IMMUNOLOGICAL SCIENCES**

Web-site: <https://immunologicalsciences.com> - E-mail: [info@immunologicalsciences.com](mailto:info@immunologicalsciences.com)