

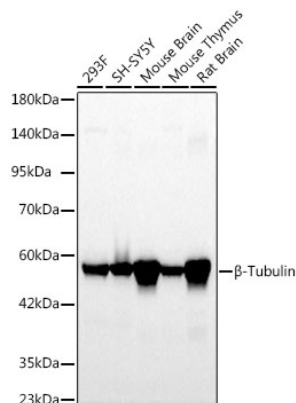


Product name:	β-Tubulin Rabbit Monoclonal Antibody
Cat number:	MAB12289
Conjugate:	Unconjugated
Host:	Rabbit
Size:	100 ug
Clone:	9F3
Concentration:	1mg/ml
Isotype:	IgG
Immunogen:	A synthetic peptide corresponding to a sequence within amino acids 250-350 of human β-Tubulin (P07437).
Reactivity:	Human,Mouse,Rat
Applications:	WB,1:5000 - 1:10000 IHC-P,1:50 - 1:200 IP,0.5μg-4μg antibody for 200μg-400μg extracts of whole cells ELISA,Recommended starting concentration is 1 μg/mL. Please optimize the concentration based on your specific assay requirements.
Molecular Weight:	55kDa
Purification:	Affinity purification
Background:	This gene encodes a beta tubulin protein. This protein forms a dimer with alpha tubulin and acts as a structural component of microtubules. Mutations in this gene cause cortical dysplasia, complex, with other brain malformations 6. Alternative splicing results in multiple splice variants. There are multiple pseudogenes for this gene on chromosomes 1, 6, 7, 8, 9, and 13.
Form:	liquid
Buffer:	PBS with 0.02% Sodium azide,0.05% BSA,50% glycerol,pH7.3.
Storage:	Store at -20°C. Avoid freeze / thaw cycles.

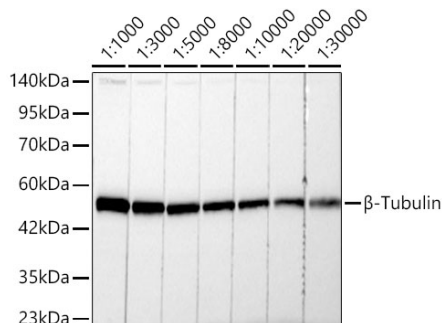
For Research Use Only

IMMUNOLOGICAL SCIENCES

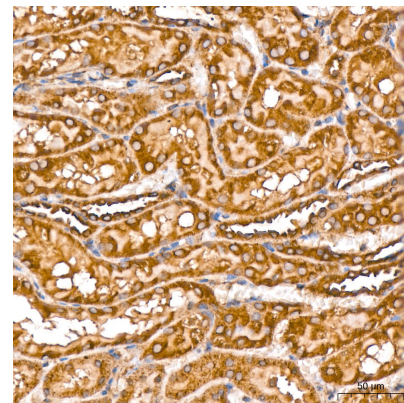
Web-site: <https://immunologicalsciences.com> - E-mail: info@immunologicalsciences.com



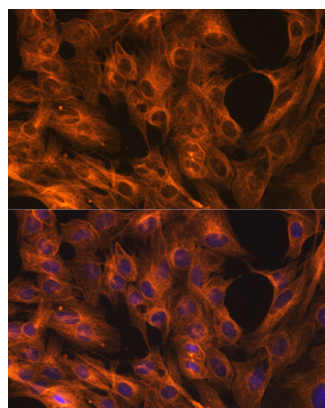
Western blot analysis of various lysates using β-Tubulin Rabbit mAb at 1:5000 dilution. Secondary antibody: HRP-conjugated Goat anti-Rabbit IgG at 1:10000 dilution. Lysates/proteins: 25μg per lane. Blocking buffer: 3% nonfat dry milk in TBST. Detection: ECL Basic Kit . Exposure time: 20s.



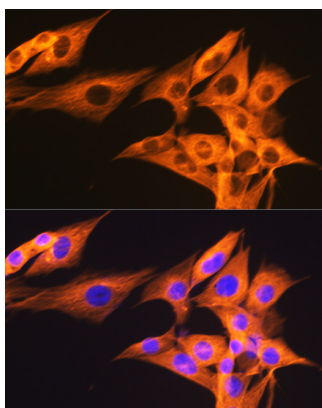
Western blot analysis of lysates from 293F cells, using β-Tubulin Rabbit mAb at 1:1000-1:30000 dilution. Secondary antibody: HRP-conjugated Goat anti-Rabbit IgG at 1:10000 dilution. Lysates/proteins: 25μg per lane. Blocking buffer: 3% nonfat dry milk in TBST. Detection: ECL Basic Kit . Exposure time: 10s.



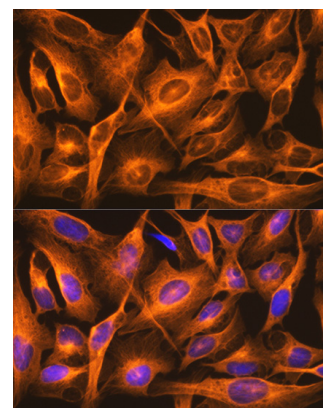
Immunohistochemistry analysis of paraffin-embedded Rat kidney tissue using β-Tubulin Rabbit mAb at a dilution of 1:200 . High pressure antigen retrieval performed with 0.01M Citrate Bufferr prior to IHC staining.



Immunofluorescence analysis of C6 cells using β-Tubulin Rabbit mAb at dilution of 1:100. Blue: DAPI for nuclear staining.



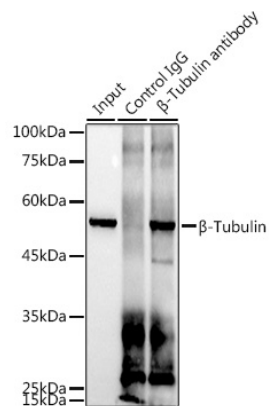
Immunofluorescence analysis of NIH/3T3 cells using β-Tubulin Rabbit mAb at dilution of 1:100. Blue: DAPI for nuclear staining.



Immunofluorescence analysis of U2OS cells using β-Tubulin Rabbit mAb at dilution of 1:100. Blue: DAPI for nuclear staining.

For Research Use Only
IMMUNOLOGICAL SCIENCES

Web-site: <https://immunologicalsciences.com> - E-mail: info@immunologicalsciences.com



Immunoprecipitation analysis of 300 µg extracts of 293T cells using 3 µg β-Tubulin antibody . Western blot was performed from the immunoprecipitate using β-Tubulin antibody at a dilution of 1:1000.

For Research Use Only
IMMUNOLOGICAL SCIENCES

Web-site: <https://immunologicalsciences.com> - E-mail: info@immunologicalsciences.com