



<b>Product name:</b>	Recombinant Human IL-6 Protein
<b>Cat number:</b>	GRF00201
<b>Size:</b>	20 ug
<b>Synonyms:</b>	IL6;BSF-2;BSF2;CDF;HGF;HSF;IFN-beta-2;IFNB2;IL-6
<b>Molecular Weight:</b>	21.65 kDa
<b>Purification:</b>	≥ 95 % as determined by SDS-PAGE.
<b>Background:</b>	Interleukin-6 (IL-6) is a multifunctional $\alpha$ -helical cytokine that regulates cell growth and differentiation of various tissues, which is known particularly for its role in the immune response and acute phase reactions. The encoded protein has been shown to be an endogenous pyrogen capable of inducing fever in people with autoimmune diseases or infections. The protein is primarily produced at sites of acute and chronic inflammation, where it is secreted into the serum and induces a transcriptional inflammatory response through interleukin 6 receptor, $\alpha$ . The functioning of this protein is implicated in a wide variety of inflammation-associated disease states, including susceptibility to diabetes mellitus and systemic juvenile rheumatoid arthritis.
<b>Form:</b>	lyophilized
<b>Storage:</b>	Store at -20°C. Store the lyophilized protein at -20°C to -80 °C up to 1 year from the date of receipt. After reconstitution, the protein solution is stable at -20°C for 3 months, at 2-8°C for up to 1 week.
<b>Tags:</b>	C-His
<b>Source:</b>	HEK293 cells
<b>Description:</b>	High quality, high purity and low endotoxin recombinant Recombinant Human IL-6 Protein (RP00201), tested reactivity in HEK293 cells and has been validated in SDS-PAGE. 100% guaranteed.
<b>Endotoxin:</b>	< 0.1 EU/ $\mu$ g of the protein by LAL method.
<b>Bio-Activity:</b>	1. Measured by its binding ability in a functional ELISA. Immobilized Human IL6R at 1 $\mu$ g/mL (100 $\mu$ L/well) can bind Human IL-6 with a linear range of 2-15 ng/mL. 2. Measured in a cell proliferation assay using TF-1 Human erythroleukemic cells. The ED 50 for this effect is 0.10-0.40 ng/mL. The specific activity of Recombinant Human IL-6 is $>1.2 \times 10^8$ IU/mg, which is calibrated against the human IL-6 WHO International Standard (NIBSC code: 21/308).
<b>Formulation:</b>	Lyophilized from a 0.22 $\mu$ m filtered solution of PBS, pH 7.4. Contact us for customized product form or formulation.

**For Research Use Only**

**IMMUNOLOGICAL SCIENCES**

Web-site: <https://immunologicalsciences.com> - E-mail: [info@immunologicalsciences.com](mailto:info@immunologicalsciences.com)

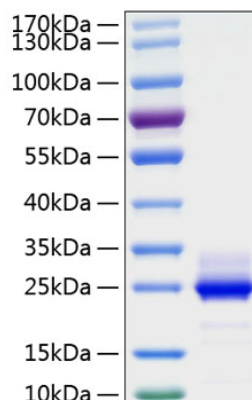
**Reconstitution:**

Centrifuge the vial before opening. Reconstitute to a concentration of 0.1-0.5 mg/mL in sterile distilled water. Avoid vortex or vigorously pipetting the protein. For long term storage, it is recommended to add a carrier protein or stabilizer (e.g. 0.1% BSA, 5% HSA, 10% FBS or 5% Trehalose), and aliquot the reconstituted protein solution to minimize free-thaw cycles.

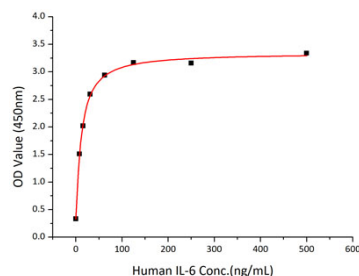
**For Research Use Only**

**IMMUNOLOGICAL SCIENCES**

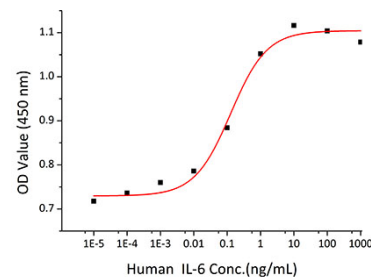
Web-site: <https://immunologicalsciences.com> - E-mail: [info@immunologicalsciences.com](mailto:info@immunologicalsciences.com)



Immobilized Human IL6R at 1  $\mu\text{g/mL}$   
(100  $\mu\text{L/well}$ ) can bind Human IL-6 with  
a linear range of 2-15 ng/mL.



Immobilized Human IL6R at 1  $\mu\text{g/mL}$   
(100  $\mu\text{L/well}$ ) can bind Human IL-6 with  
a linear range of 2-15 ng/mL.



Measured in a cell proliferation assay  
using TF-1 Human erythroleukemic  
cells. The ED50 for this effect is  
0.10-0.40 ng/mL. The specific activity of  
Recombinant Human IL-6 is  $>1.2 \times 10^8$   
IU/mg, which is calibrated against the  
human IL-6 WHO International  
Standard (NIBSC code: 21/308).

**For Research Use Only**

**IMMUNOLOGICAL SCIENCES**

Web-site: <https://immunologicalsciences.com> - E-mail: [info@immunologicalsciences.com](mailto:info@immunologicalsciences.com)