



Product name:	IP3R-I rabbit Polyclonal Antibody
Cat number:	ABE8348
Conjugate:	unconjugated
Host:	Rabbit
Size:	100 ug
Synonyms:	ITPR1; INSP3R1; Inositol 1,4,5-trisphosphate receptor type 1; IP3 receptor isoform 1; IP3R 1; InsP3R1; Type 1 inositol 1,4,5-trisphosphate receptor; Type 1 InsP3 receptor
Clone:	Polyclonal
Concentration:	1 mg/ml
Isotype:	IgG
Immunogen:	Synthesized peptide derived from IP3R-I . at AA range: 1700-1780
Reactivity:	Human;Mouse;Rat
Applications:	WB 1:500-2000 IHC-p 1:50-300
Molecular Weight:	320kD
Background:	This gene encodes an intracellular receptor for inositol 1,4,5-trisphosphate. Upon stimulation by inositol 1,4,5-trisphosphate, this receptor mediates calcium release from the endoplasmic reticulum. Mutations in this gene cause spinocerebellar ataxia type 15, a disease associated with an heterogeneous group of cerebellar disorders. Multiple transcript variants have been identified for this gene. [provided by RefSeq, Nov 2009],
Form:	liquid
Storage:	-20°C/1 year

For Research Use Only

IMMUNOLOGICAL SCIENCES

Web-site: <https://immunologicalsciences.com> - E-mail: info@immunologicalsciences.com

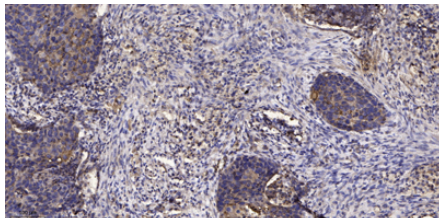


293T

— IP3R-I

170—
130—
100—
70—
55—
40—
35—
25—

Western blot analysis of 293T using IP3R-I antibody. Antibody was diluted at 1:500. Secondary antibody was diluted at 1:20000



Immunohistochemical analysis of paraffin-embedded human Squamous cell carcinoma of lung. 1, Antibody was diluted at 1:200(4° overnight). 2, Tris-EDTA, pH9.0 was used for antigen retrieval. 3, Secondary antibody was diluted at 1:200(room temperature, 45min).

For Research Use Only

IMMUNOLOGICAL SCIENCES

Web-site: <https://immunologicalsciences.com> - E-mail: info@immunologicalsciences.com