

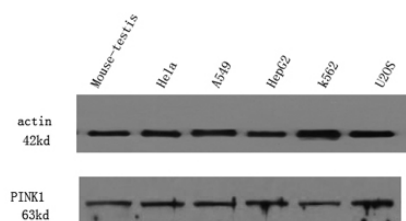


Product name:	PINK1 rabbit Polyclonal Antibody
Cat number:	ABE10983
Conjugate:	unconjugated
Host:	Rabbit
Size:	100 ug
Clone:	Polyclonal
Concentration:	1 mg/ml
Isotype:	IgG
Immunogen:	Synthesized peptide derived from part region of human protein
Reactivity:	Human;Mouse;Rat
Applications:	WB 1:500-2000 ELISA 1:5000-20000
Molecular Weight:	63kD
Background:	This gene encodes a serine/threonine protein kinase that localizes to mitochondria. It is thought to protect cells from stress-induced mitochondrial dysfunction. Mutations in this gene cause one form of autosomal recessive early-onset Parkinson disease. [provided by RefSeq, Jul 2008],
Form:	liquid
Storage:	-20°C/1 year

For Research Use Only

IMMUNOLOGICAL SCIENCES

Web-site: <https://immunologicalsciences.com> - E-mail: info@immunologicalsciences.com



Western Blot analysis of various cell
lysis. Primary Antibody was diluted at
1:1000. Secondary antibody was diluted
at 1:10000

For Research Use Only
IMMUNOLOGICAL SCIENCES

Web-site: <https://immunologicalsciences.com> - E-mail: info@immunologicalsciences.com