

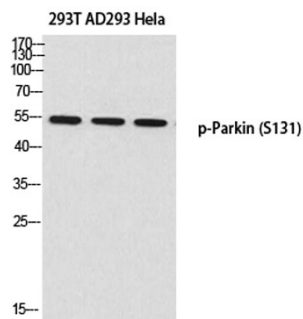


Product name:	Parkin (phospho Ser131) rabbit Polyclonal Antibody
Cat number:	ABE6478
Conjugate:	unconjugated
Host:	Rabbit
Size:	100 ug
Synonyms:	PARK2; PRKN; E3 ubiquitin-protein ligase parkin; Parkinson juvenile disease protein 2; Parkinson disease protein 2
Clone:	Polyclonal
Concentration:	1 mg/ml
Isotype:	IgG
Immunogen:	The antiserum was produced against synthesized peptide derived from human Parkin around the phosphorylation site of Ser131. AA range:101-150
Reactivity:	Human;Rat;Mouse;
Applications:	Immunohistochemistry: 1/100 - 1/300. ELISA: 1/20000. Not yet tested in other applications.
Molecular Weight:	51kD
Background:	The precise function of this gene is unknown; however, the encoded protein is a component of a multiprotein E3 ubiquitin ligase complex that mediates the targeting of substrate proteins for proteasomal degradation. Mutations in this gene are known to cause Parkinson disease and autosomal recessive juvenile Parkinson disease. Alternative splicing of this gene produces multiple transcript variants encoding distinct isoforms. Additional splice variants of this gene have been described but currently lack transcript support. [provided by RefSeq, Jul 2008],
Form:	liquid
Storage:	-20°C/1 year

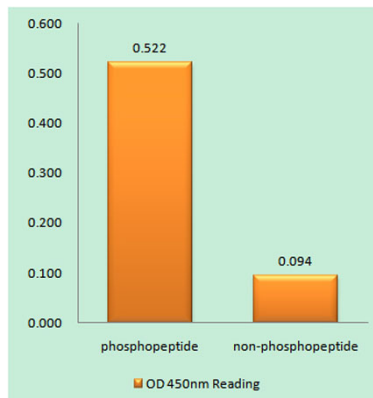
For Research Use Only

IMMUNOLOGICAL SCIENCES

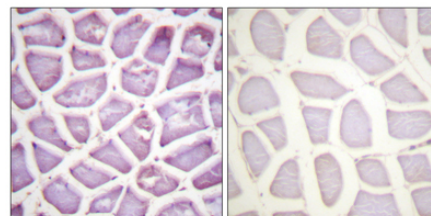
Web-site: <https://immunologicalsciences.com> - E-mail: info@immunologicalsciences.com



Western blot analysis of 293T AD293 Hela using p-Parkin (S131) antibody. Antibody was diluted at 1:500



Enzyme-Linked Immunosorbent Assay (Phospho-ELISA) for Immunogen Phosphopeptide (Phospho-left) and Non-Phosphopeptide (Phospho-right), using Parkin (Phospho-Ser131) Antibody



Immunohistochemistry analysis of paraffin-embedded human skeletal muscle, using Parkin (Phospho-Ser131) Antibody. The picture on the right is blocked with the phospho peptide.

For Research Use Only
IMMUNOLOGICAL SCIENCES