

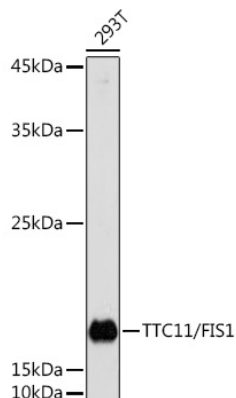


Product name:	TTC11/FIS1 Rabbit Polyclonal Antibody
Cat number:	AB5821
Conjugate:	Unconjugated
Host:	Rabbit
Size:	100 ug
Synonyms:	TTC11; CGI-135; TTC11/FIS1
Concentration:	1mg/ml
Isotype:	IgG
Immunogen:	Recombinant protein. This information is considered to be commercially sensitive.
Reactivity:	Human, Mouse, Rat
Applications:	WB 1:500 - 1:2000 IF/ICC 1:50 - 1:200 IP 0.5µg-4µg antibody for 200µg-400µg extracts of whole cells ELISA Recommended starting concentration is 1 µg/mL. Please optimize the concentration based on your specific assay requirements.
Molecular Weight:	17kDa
Purification:	Affinity purification
Background:	Enables identical protein binding activity. Involved in several processes, including calcium-mediated signaling using intracellular calcium source; cellular calcium ion homeostasis; and mitochondrion organization. Acts upstream of or within mitochondrion morphogenesis. Located in mitochondrion and peroxisome. Is integral component of mitochondrial outer membrane and integral component of peroxisomal membrane. Part of protein-containing complex. Biomarker of Alzheimer's disease.
Form:	liquid
Buffer:	PBS with 0.09% Sodium azide, 50% glycerol, pH7.3.
Storage:	Store at -20°C. Avoid freeze / thaw cycles.

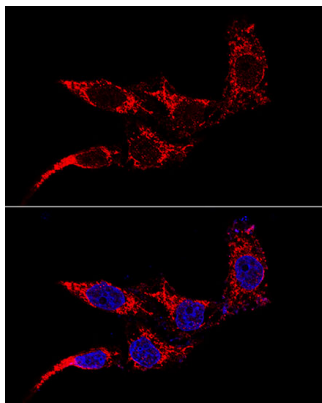
For Research Use Only

IMMUNOLOGICAL SCIENCES

Web-site: <https://immunologicalsciences.com> - E-mail: info@immunologicalsciences.com



Western blot analysis of lysates from 293T cells, using TTC11/FIS1 Rabbit pAb at 1:1000 dilution. Secondary antibody: HRP-conjugated Goat anti-Rabbit IgG (H+L) at 1:10000 dilution. Lysates/proteins: 25µg per lane. Blocking buffer: 3% nonfat dry milk in TBST. Detection: ECL West Pico Plus. Exposure time: 30s.



Confocal immunofluorescence analysis of HeLa cells using TTC11/FIS1 Rabbit pAb at dilution of 1:50 (60x lens). Blue: DAPI for nuclear staining.

**For Research Use Only
IMMUNOLOGICAL SCIENCES**

Web-site: <https://immunologicalsciences.com> - E-mail: info@immunologicalsciences.com