

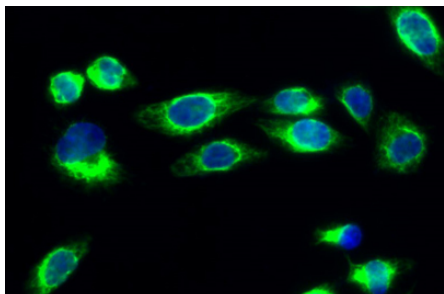


Product name:	p21 rabbit pAb
Cat number:	ABE3100
Conjugate:	unconjugated
Host:	Rabbit
Size:	100 ug
Synonyms:	CDKN1A; CAP20; CDKN1; CIP1; MDA6; PIC1; SDI1; WAF1; Cyclin-dependent kinase inhibitor 1; CDK-interacting protein 1; Melanoma differentiation-associated protein 6; MDA-6; p21
Clone:	Polyclonal
Concentration:	1 mg/ml
Isotype:	IgG
Immunogen:	The antiserum was produced against synthesized peptide derived from human p21 Cip1. AA range:111-160
Reactivity:	Human;Mouse;Rat
Applications:	IF: 1:50-200 Western Blot: 1/500 - 1/2000. ELISA: 1/20000. Not yet tested in other applications.
Molecular Weight:	21kD
Background:	This gene encodes a potent cyclin-dependent kinase inhibitor. The encoded protein binds to and inhibits the activity of cyclin-cyclin-dependent kinase2 or -cyclin-dependent kinase4 complexes, and thus functions as a regulator of cell cycle progression at G1. The expression of this gene is tightly controlled by the tumor suppressor protein p53, through which this protein mediates the p53-dependent cell cycle G1 phase arrest in response to a variety of stress stimuli. This protein can interact with proliferating cell nuclear antigen, a DNA polymerase accessory factor, and plays a regulatory role in S phase DNA replication and DNA damage repair. This protein was reported to be specifically cleaved by CASP3-like caspases, which thus leads to a dramatic activation of cyclin-dependent kinase2, and may be instrumental in the execution of apoptosis following caspase activation. Mice that lac
Form:	liquid
Storage:	-20°C/1 year

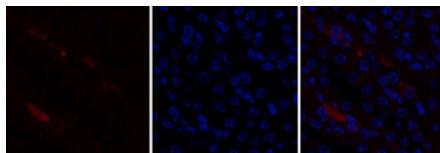
For Research Use Only

IMMUNOLOGICAL SCIENCES

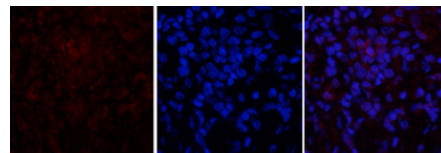
Web-site: <https://immunologicalsciences.com> - E-mail: info@immunologicalsciences.com



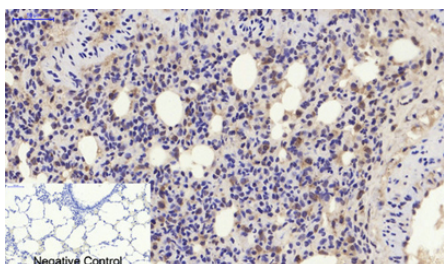
Immunofluorescence analysis of Hela cell. 1,p21 Polyclonal Antibody(green) was diluted at 1:200(4° overnight). 2, Goat Anti Rabbit Alexa Fluor 488 was diluted at 1:1000(room temperature, 50min). 3 DAPI(blue) 10min.



Immunofluorescence analysis of mouse-kidney tissue. 1,p21 Polyclonal Antibody(red) was diluted at 1:200(4°C,overnight). 2, Cy3 labeled Secondary antibody was diluted at 1:300(room temperature, 50min). 3, Picture B: DAPI(blue) 10min. Picture A:Target. Pictur



Immunofluorescence analysis of rat-lung tissue. 1,p21 Polyclonal Antibody(red) was diluted at 1:200(4°C,overnight). 2, Cy3 labeled Secondary antibody was diluted at 1:300(room temperature, 50min). 3, Picture B: DAPI(blue) 10min. Picture A:Target. Picture B:



Immunohistochemical analysis of paraffin-embedded Rat-lung tissue. 1,p21 Polyclonal Antibody was diluted at 1:200(4°C,overnight). 2, Sodium citrate pH 6.0 was used for antibody retrieval(>98°C,20min). 3,Secondary antibody was diluted at 1:200(room tempeRa

For Research Use Only

IMMUNOLOGICAL SCIENCES