

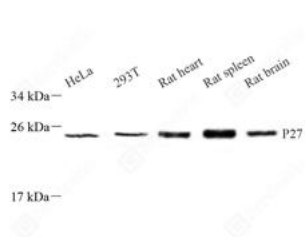


Product name:	Anti-p27 KIP 1 Rabbit pAb
Cat number:	ABS112176
Conjugate:	unconjugated
Host:	Rabbit
Size:	100 µL
Synonyms:	CDKN1B, CDKN4, KIP1, MEN1B, MEN4, P27KIP1, cyclin-dependent kinase inhibitor 1B, cyclin dependent kinase inhibitor 1B,p27Kip1, Cdk1b, p27, Cyclin-dependent kinase inhibitor p27, P27-like cyclin-dependent kinase inhibitor
Concentration:	1mg/ml
Isotype:	IgG
Immunogen:	KLH conjugated Synthetic peptide corresponding to Mouse p27 KIP 1
Reactivity:	Species, Human, Mouse, Rat
Applications:	Applications Dilution WB 1: 500-1: 1000
Purification:	Affinity purification
Background:	CDKN1B, also named as P27 or KIP1, is a cyclin-dependent kinase inhibitor, which shares a limited similarity with CDK inhibitor CDKN1A/p21. P27 binds to and prevents the activation of cyclin E-CDK2 or cyclin D-CDK4 complexes, and thus controlling cell cycle progression at G1. The degradation of this protein, which is triggered by its CDK dependent phosphorylation and subsequent ubiquitination by SCF complexes, is required for the cellular transition from quiescence to the proliferative state. Downregulation of P27 has been implicated in the progression of several malignancies, including lung cancer, hepatocellular carcinoma, salivary cancer, oral squamous cell carcinomas, and gastric cancer.
Form:	Liquid
Buffer:	PBS with 0.15% ProClin300, 100 µg/mL BSA and 50% glycerol.
Storage:	Store at -20°C for one year. Avoid repeated freeze/thaw cycles.

For Research Use Only

IMMUNOLOGICAL SCIENCES

Web-site: <https://immunologicalsciences.com> - E-mail: info@immunologicalsciences.com



WB analysis of p27 KIP 1. Sample:
Protein treated by RIPA Lysis Buffer
Blocking buffer: 3% Nonfat dry milk in
TBST, RT, 1h. Primary antibody: 1:
1000, 4°C overnight. Secondary
antibody: HRP conjugated Goat
Anti-Rabbit IgG , 1: 5000, RT, 1h.



WB analysis of p27 KIP 1. Sample:
Protein treated by RIPA Lysis Buffer
Blocking buffer: 3% Nonfat dry milk in
TBST, RT, 1h. Primary antibody: 1:
1000, 4°C overnight. Secondary
antibody: HRP conjugated Goat
Anti-Rabbit IgG , 1: 5000, RT, 1h.

**For Research Use Only
IMMUNOLOGICAL SCIENCES**