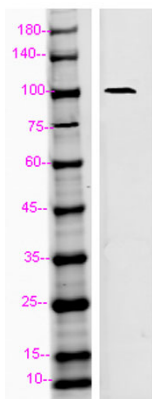


| | |
|--------------------------|---|
| Product name: | LAMP2 / CD107b Rabbit Monoclonal Antibody |
| Cat number: | MABE8390 |
| Conjugate: | unconjugated |
| Host: | Rabbit |
| Size: | 100 ug |
| Synonyms: | LAMP2; Lysosome-associated membrane glycoprotein 2; LAMP-2; Lysosome-associated membrane protein 2; CD107 antigen-like family member B; CD107b |
| Clone: | LAMP2 |
| Concentration: | 1 mg/ml |
| Isotype: | IgG |
| Immunogen: | The antiserum was produced against synthesized peptide derived from the Internal region of human LAMP2. AA range:121-170 |
| Reactivity: | Human;Rat;Mouse; |
| Applications: | Western Blot: 1/500 - 1/2000. IHC-p: 1:100-1:300. ELISA: 1/10000. Not yet tested in other applications. |
| Molecular Weight: | 100kD |
| Background: | The protein encoded by this gene is a member of a family of membrane glycoproteins. This glycoprotein provides selectins with carbohydrate ligands. It may play a role in tumor cell metastasis. It may also function in the protection, maintenance, and adhesion of the lysosome. Alternative splicing of this gene results in multiple transcript variants encoding distinct proteins. [provided by RefSeq, Jul 2008], |
| Form: | liquid |
| Storage: | -20°C/1 year |

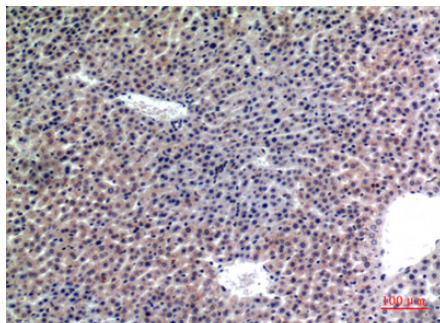
For Research Use Only

IMMUNOLOGICAL SCIENCES

Web-site: <https://immunologicalsciences.com> - E-mail: info@immunologicalsciences.com



Western blot analysis of 293T using LAMP2 antibody. Antibody was diluted at 1:1000. Secondary antibody was diluted at 1:20000



Immunohistochemical analysis of paraffin-embedded mouse-liver, antibody was diluted at 1:100

For Research Use Only

IMMUNOLOGICAL SCIENCES

Web-site: <https://immunologicalsciences.com> - E-mail: info@immunologicalsciences.com