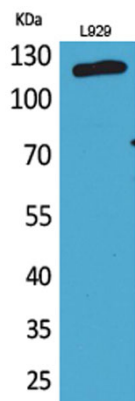


Product name:	CD107a/ LAMP1 rabbit Polyclonal Antibody
Cat number:	ABE3990
Conjugate:	unconjugated
Host:	Rabbit
Size:	100 ug
Synonyms:	LAMP1; Lysosome-associated membrane glycoprotein 1; LAMP-1; Lysosome-associated membrane protein 1; CD107 antigen-like family member A; CD107a
Clone:	Polyclonal
Concentration:	1 mg/ml
Isotype:	IgG
Immunogen:	The antiserum was produced against synthesized peptide derived from the Internal region of human LAMP1. AA range:211-260
Reactivity:	Human;Rat;Mouse;
Applications:	Western Blot: 1/500 - 1/2000. ELISA: 1/20000. Not yet tested in other applications.
Molecular Weight:	120kD
Background:	The protein encoded by this gene is a member of a family of membrane glycoproteins. This glycoprotein provides selectins with carbohydrate ligands. It may also play a role in tumor cell metastasis. [provided by RefSeq, Jul 2008],
Form:	liquid
Storage:	-20°C/1 year

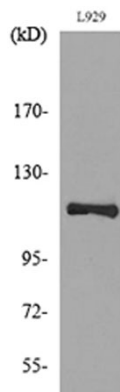
For Research Use Only

IMMUNOLOGICAL SCIENCES

Web-site: <https://immunologicalsciences.com> - E-mail: info@immunologicalsciences.com



Western Blot analysis of L929 cells using CD107a Polyclonal Antibody. Secondary antibody was diluted at 1:20000



Western blot analysis of lysate from L929 cells, using LAMP1 Antibody.

For Research Use Only

IMMUNOLOGICAL SCIENCES

Web-site: <https://immunologicalsciences.com> - E-mail: info@immunologicalsciences.com