

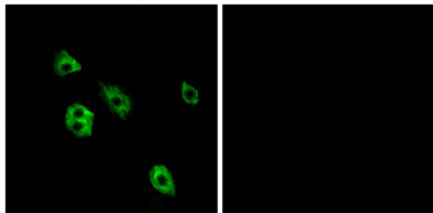


Product name:	GPR27 Rabbit Polyclonal Antibody
Cat number:	ABE5604
Conjugate:	unconjugated
Host:	Rabbit
Size:	100 ug
Synonyms:	GPR27; SREB1; Probable G-protein coupled receptor 27; Super conserved receptor expressed in brain 1
Clone:	Polyclonal
Concentration:	1 mg/ml
Isotype:	IgG
Immunogen:	The antiserum was produced against synthesized peptide derived from human GPR27. AA range:181-230
Reactivity:	Human; Mouse; Rat
Applications:	Western Blot: 1/500 - 1/2000. Immunofluorescence: 1/200 - 1/1000. ELISA: 1/10000. Not yet tested in other applications.
Molecular Weight:	39kD
Background:	GPR27 is a member of the G protein-coupled receptors (GPCRs), a large family of receptors that have a similar structure characterized by 7 transmembrane domains. Activation of GPCRs by extracellular stimuli such as neurotransmitters, hormones, or light induces an intracellular signaling cascade mediated by heterotrimeric GTP-binding proteins, or G proteins.
Form:	Liquid
Storage:	-20°C/1 year

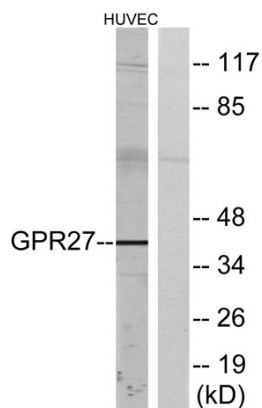
For Research Use Only

IMMUNOLOGICAL SCIENCES

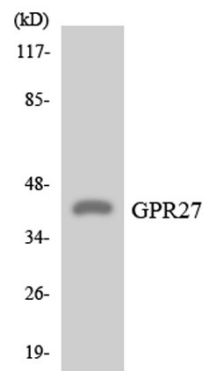
Web-site: <https://immunologicalsciences.com> - E-mail: info@immunologicalsciences.com



Immunofluorescence analysis of A549 cells, using GPR27 Antibody. The picture on the right is blocked with the synthesized peptide.



Western blot analysis of lysates from HUVEC cells, using GPR27 Antibody. The lane on the right is blocked with the synthesized peptide.



Western blot analysis of the lysates from HeLa cells using GPR27 antibody.

**For Research Use Only
IMMUNOLOGICAL SCIENCES**