

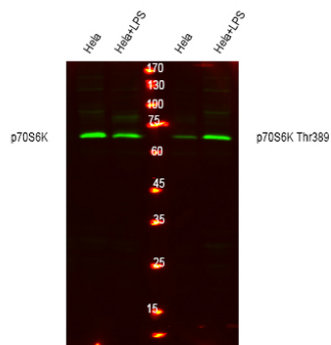


|                          |  |
|--------------------------|--|
| <b>Product name:</b>     | p70 S6 kinase $\alpha$ rabbit pAb  |
| <b>Cat number:</b>       | ABE3136  |
| <b>Conjugate:</b>        | unconjugated   |
| <b>Host:</b>             | Rabbit   |
| <b>Size:</b>             | 100 ug   |
| <b>Synonyms:</b>         | RPS6KB1; STK14A; Ribosomal protein S6 kinase beta-1; S6K-beta-1; S6K1; 70 kDa ribosomal protein S6 kinase 1; P70S6K1; p70-S6K 1; Ribosomal protein S6 kinase I; Serine/threonine-protein kinase 14A; p70 ribosomal S6 kinase alpha; p70 S6 kinas   |
| <b>Clone:</b>            | Polyclonal   |
| <b>Concentration:</b>    | 1 mg/ml  |
| <b>Isotype:</b>          | IgG  |
| <b>Immunogen:</b>        | The antiserum was produced against synthesized peptide derived from human p70 S6 Kinase. AA range:337-386  |
| <b>Reactivity:</b>       | Human;Mouse;Rat;Pig  |
| <b>Applications:</b>     | Western Blot: 1/500 - 1/2000. Immunohistochemistry: 1/100 - 1/300. Immunofluorescence: 1/200 - 1/1000. ELISA: 1/20000. Not yet tested in other applications.   |
| <b>Molecular Weight:</b> | 60kD   |
| <b>Background:</b>       | ribosomal protein S6 kinase B1(RPS6KB1) Homo sapiens This gene encodes a member of the ribosomal S6 kinase family of serine/threonine kinases. The encoded protein responds to mTOR (mammalian target of rapamycin) signaling to promote protein synthesis, cell growth, and cell proliferation. Activity of this gene has been associated with human cancer. Alternatively spliced transcript variants have been observed. The use of alternative translation start sites results in isoforms with longer or shorter N-termini which may differ in their subcellular localizations. There are two pseudogenes for this gene on chromosome 17. [provided by RefSeq, Jan 2013], |
| <b>Form:</b>             | liquid   |
| <b>Storage:</b>          | -20°C/1 year   |

**For Research Use Only**

**IMMUNOLOGICAL SCIENCES**

Web-site: <https://immunologicalsciences.com> - E-mail: [info@immunologicalsciences.com](mailto:info@immunologicalsciences.com)



Western blot analysis of lysates from HeLa cells, treated with LPS 100ng/ml 30', using total P70 S6 Kinase Antibody and P70 S6 Kinase (phospho T389) antibody. (Green) primary antibody was diluted at 1:1000, 4° over night, s

**For Research Use Only**  
**IMMUNOLOGICAL SCIENCES**