

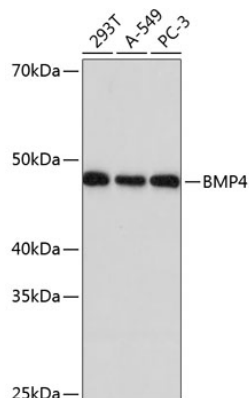


Product name:	BMP4 Rabbit Monoclonal Antibody
Cat number:	MAB11405
Conjugate:	Unconjugated
Host:	Rabbit
Size:	100 ug
Synonyms:	ZYME; BMP2B; OFC11; BMP2B1; MCOPS6; BMP4
Clone:	ARC0587
Concentration:	1mg/ml
Isotype:	IgG
Immunogen:	Synthetic peptide. This information is considered to be commercially sensitive.
Reactivity:	Human
Applications:	WB 1:1000 - 1:6000 IHC-P 1:50 - 1:200 IF/ICC 1:50 - 1:500 ELISA Recommended starting concentration is 1 µg/mL. Please optimize the concentration based on your specific assay requirements.
Molecular Weight:	47kDa
Purification:	Affinity purification
Background:	This gene encodes a secreted ligand of the TGF-beta (transforming growth factor-beta) superfamily of proteins. Ligands of this family bind various TGF-beta receptors leading to recruitment and activation of SMAD family transcription factors that regulate gene expression. The encoded preproprotein is proteolytically processed to generate each subunit of the disulfide-linked homodimer. This protein regulates heart development and adipogenesis. Mutations in this gene are associated with orofacial cleft and microphthalmia in human patients. The encoded protein may also be involved in the pathology of multiple cardiovascular diseases and human cancers.
Form:	liquid
Buffer:	PBS with 0.02% sodium azide, 0.05% BSA, 50% glycerol, pH 7.3.
Storage:	Store at -20°C. Avoid freeze / thaw cycles.

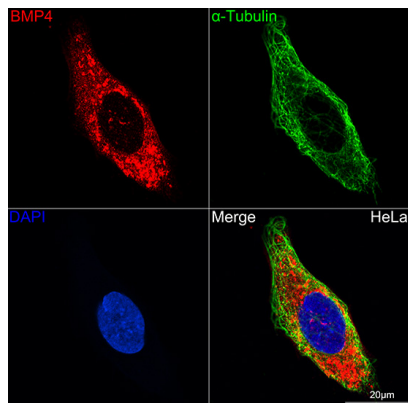
For Research Use Only

IMMUNOLOGICAL SCIENCES

Web-site: <https://immunologicalsciences.com> - E-mail: info@immunologicalsciences.com



Western blot analysis of various lysates using BMP4 Rabbit mAb at 11000 dilution. Secondary antibody: HRP-conjugated Goat anti-Rabbit IgG (H+L) at 1:10000 dilution. Lysates/proteins: 25µg per lane. Blocking buffer: 3% nonfat dry milk in TBST. Detection: ECL West Pico Plus. Exposure time: 10s.



Immunohistochemistry analysis of paraffin-embedded Human colon using BMP4 Rabbit mAb at dilution of 1:100 (40x lens). Microwave antigen retrieval performed with 0.01M PBS Buffer (pH 7.2) prior to IHC staining.

For Research Use Only
IMMUNOLOGICAL SCIENCES

Web-site: <https://immunologicalsciences.com> - E-mail: info@immunologicalsciences.com