

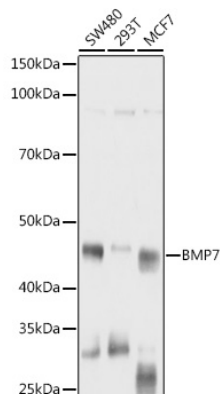


<b>Product name:</b>	BMP7 Rabbit Polyclonal Antibody
<b>Cat number:</b>	AB0697
<b>Conjugate:</b>	Unconjugated
<b>Host:</b>	Rabbit
<b>Size:</b>	100 ug
<b>Synonyms:</b>	OP-1; BMP7
<b>Concentration:</b>	1mg/ml
<b>Isotype:</b>	IgG
<b>Immunogen:</b>	Recombinant protein. This information is considered to be commercially sensitive.
<b>Reactivity:</b>	Human, Mouse, Rat
<b>Applications:</b>	WB 1:500 - 1:1000 IHC-P 1:50 - 1:200 ELISA Recommended starting concentration is 1 µg/mL. Please optimize the concentration based on your specific assay requirements.
<b>Molecular Weight:</b>	49kDa
<b>Purification:</b>	Affinity purification
<b>Background:</b>	This gene encodes a secreted ligand of the TGF-beta (transforming growth factor-beta) superfamily of proteins. Ligands of this family bind various TGF-beta receptors leading to recruitment and activation of SMAD family transcription factors that regulate gene expression. The encoded preproprotein is proteolytically processed to generate each subunit of the disulfide-linked homodimer, which plays a role in bone, kidney and brown adipose tissue development. Additionally, this protein induces ectopic bone formation and may promote fracture healing in human patients.
<b>Form:</b>	liquid
<b>Buffer:</b>	PBS containing 50% glycerol, preserved with proclin300 or sodium azide (as specified on the Certificate of Analysis), pH 7.3.
<b>Storage:</b>	Store at -20°C. Avoid freeze / thaw cycles.

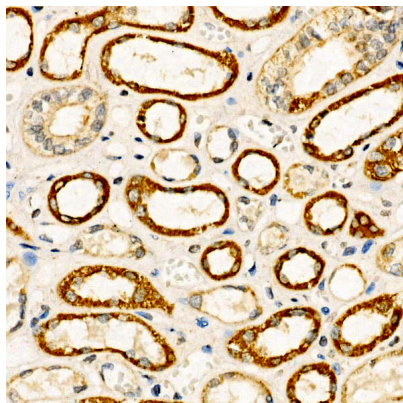
**For Research Use Only**

**IMMUNOLOGICAL SCIENCES**

Web-site: <https://immunologicalsciences.com> - E-mail: [info@immunologicalsciences.com](mailto:info@immunologicalsciences.com)



Western blot analysis of various lysates using BMP7 Rabbit pAb at 1:1000 dilution. Secondary antibody: HRP-conjugated Goat anti-Rabbit IgG (H+L) at 1:10000 dilution. Lysates/proteins: 25µg per lane. Blocking buffer: 3% nonfat dry milk in TBST. Detection: ECLWest Pico Plus. Exposure time: 1s.



Immunohistochemistry analysis of paraffin-embedded Human kidney using BMP7 Rabbit pAb at dilution of 1:50 (40x lens). High pressure antigen retrieval performed with 0.01M Citrate buffer (pH 6.0) prior to IHC staining.

**For Research Use Only**  
**IMMUNOLOGICAL SCIENCES**

Web-site: <https://immunologicalsciences.com> - E-mail: [info@immunologicalsciences.com](mailto:info@immunologicalsciences.com)