

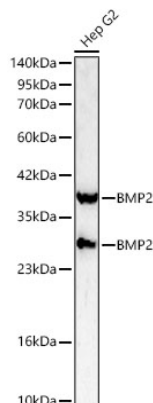


|                          |  |
|--------------------------|--|
| <b>Product name:</b>     | BMP2 Rabbit pAb  |
| <b>Cat number:</b>       | AB0231   |
| <b>Conjugate:</b>        | Unconjugated   |
| <b>Host:</b>             | Rabbit   |
| <b>Size:</b>             | 100 ug   |
| <b>Synonyms:</b>         | BDA2; BMP2A; SSFSC; SSFSC1; BMP2   |
| <b>Concentration:</b>    | 1mg/ml   |
| <b>Isotype:</b>          | IgG  |
| <b>Immunogen:</b>        | Recombinant protein. This information is considered to be commercially sensitive.  |
| <b>Reactivity:</b>       | Human, Mouse, Rat  |
| <b>Applications:</b>     | WB 1:500 - 1:1000 IHC-P 1:50 - 1:200 IF/ICC 1:50 - 1:200 ELISA<br>Recommended starting concentration is 1 µg/mL. Please optimize the concentration based on your specific assay requirements.  |
| <b>Molecular Weight:</b> | 30kDa/38kDa  |
| <b>Purification:</b>     | Affinity purification  |
| <b>Background:</b>       | This gene encodes a secreted ligand of the TGF-beta (transforming growth factor-beta) superfamily of proteins. Ligands of this family bind various TGF-beta receptors leading to recruitment and activation of SMAD family transcription factors that regulate gene expression. The encoded preproprotein is proteolytically processed to generate each subunit of the disulfide-linked homodimer, which plays a role in bone and cartilage development. Duplication of a regulatory region downstream of this gene causes a form of brachydactyly characterized by a malformed index finger and second toe in human patients. |
| <b>Form:</b>             | liquid   |
| <b>Buffer:</b>           | PBS containing 50% glycerol, preserved with proclin300 or sodium azide (as specified on the Certificate of Analysis), pH 7.3.  |
| <b>Storage:</b>          | Store at -20°C. Avoid freeze / thaw cycles.  |

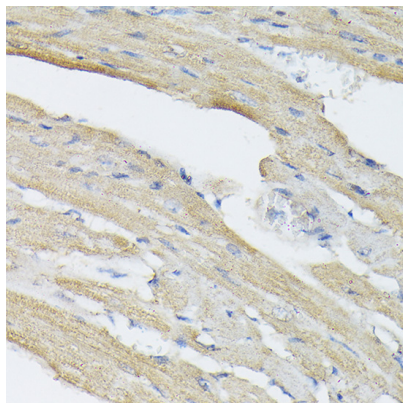
**For Research Use Only**

**IMMUNOLOGICAL SCIENCES**

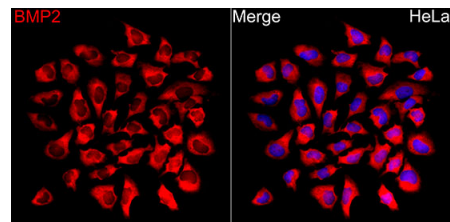
Web-site: <https://immunologicalsciences.com> - E-mail: [info@immunologicalsciences.com](mailto:info@immunologicalsciences.com)



Western blot analysis of lysates from Hep G2 cells using BMP2 Rabbit pAb at 1:1000 dilution. Secondary antibody: HRP-conjugated Goat anti-Rabbit IgG (H+L) at 1:10000 dilution. Lysates/proteins: 25 µg per lane. Blocking buffer: 3% nonfat dry milk in TBST. Detection: ECL Basic Kit. Exposure time: 90s.



Immunohistochemistry analysis of paraffin-embedded Rat heart using BMP2 Rabbit pAb at dilution of 1:50 (40x lens). High pressure antigen retrieval performed with 0.01M Citrate buffer (pH 6.0) prior to IHC staining.



Immunofluorescence analysis of HeLa cells using BMP2 Rabbit pAb(A0231) at a dilution of 1:100 (40x lens). Secondary antibody: Cy3 Goat Anti-Rabbit IgG (H+L) (at 1:500 dilution. Blue: DAPI for nuclear staining.

**For Research Use Only  
IMMUNOLOGICAL SCIENCES**

Web-site: <https://immunologicalsciences.com> - E-mail: [info@immunologicalsciences.com](mailto:info@immunologicalsciences.com)