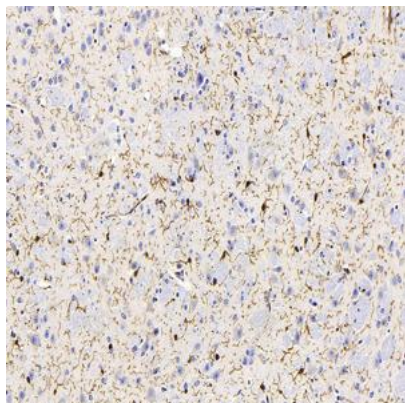


Product name:	Anti-Iba1 Mouse Monoclonal Antibody
Cat number:	MABS12105
Conjugate:	unconjugated
Host:	Rabbit
Size:	100 µL
Synonyms:	AIF-1, IBA, IRT-1, IRT1, allograft, AIF-1, AIF1, G1, IBA1, IRT 1, Protein G1, Ionized calcium-binding adapter molecule 1, MRF1, Microglia response factor, BART 1, AIF1 protein
Clone:	5G4E7
Concentration:	1mg/ml
Isotype:	IgG1, κ
Immunogen:	Recombinant protein corresponding to Mouse Iba1
Reactivity:	Species, Human, Mouse, Rat, Monkey
Applications:	IHC/IF 1: 500-1: 4000
Purification:	Affinity purification
Background:	AIF1, also named as G1, IBA1 or daintain/AIF-1, is a 143 amino acid cytoplasmic, inflammation response scaffold protein. It is constitutively expressed in monocytes and macrophages and is known to be involved in macrophage activation. It is a marker of activated macrophage. Despite a lack of detailed knowledge on the in vivo physiological functions of AIF-1, there is growing evidence that shows its aberrant expression contributes to the pathogenesis of many autoimmune diseases, including rheumatoid arthritis. AIF1 is an actin-binding protein that enhances membrane ruffling and RAC activation. It enhances lymphocyte migration and the actin-bundling activity of LCP1.
Form:	Liquid
Buffer:	PBS with 0.15% ProClin300, 100 µg/mL BSA and 50% glycerol.
Storage:	Store at -20°C for one year. Avoid repeated freeze/thaw cycles.

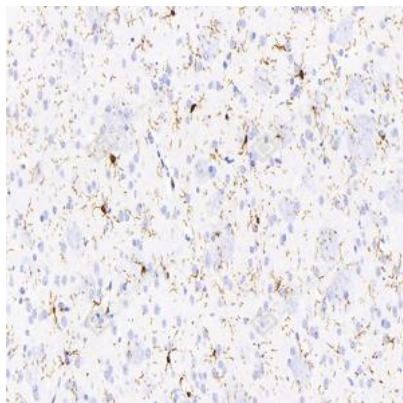
For Research Use Only

IMMUNOLOGICAL SCIENCES

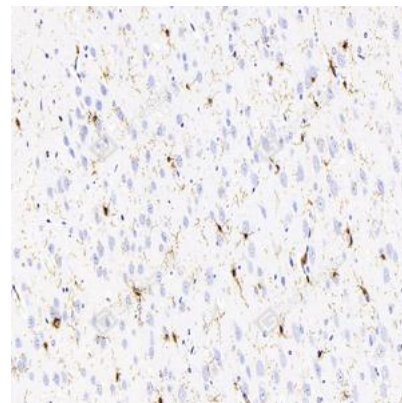
Web-site: <https://immunologicalsciences.com> - E-mail: info@immunologicalsciences.com



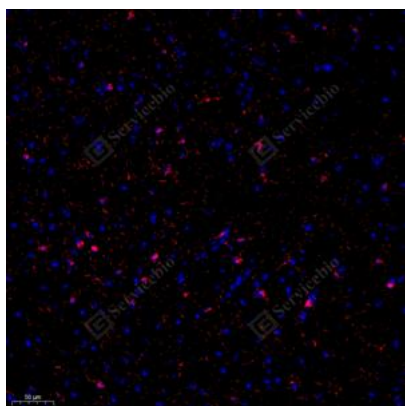
IHC analysis of Iba1. Sample: Mouse brain, 4% PFA 12-24h. Antigen retrieval: Citrate buffer, 98°C, 20 min. Primary antibody: 1: 2000, 4°C overnight. Secondary antibody: HRP conjugated Goat Anti-Mouse IgG, 1: 200, RT, 1h.



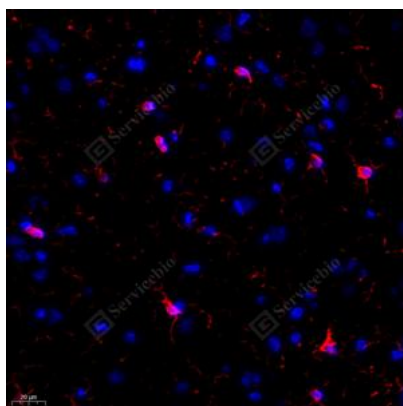
IHC analysis of Iba1. Sample: Rat brain, 4% PFA 12-24h. Antigen retrieval: Citrate buffer, 98°C, 20 min. Primary antibody: 1: 2000, 4°C overnight. Secondary antibody: HRP conjugated Goat Anti-Mouse IgG, 1: 200, RT, 1h.



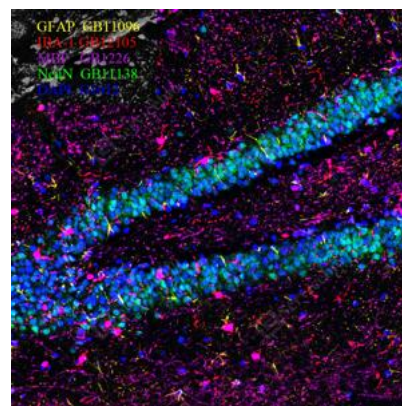
IHC analysis of Iba1. Sample: Rat brain, 4% PFA 12-24h. Antigen retrieval: Citrate buffer, 98°C, 20 min. Primary antibody: 1: 2000, 4°C overnight. Secondary antibody: HRP conjugated Goat Anti-Mouse IgG, 1: 200, RT, 1h.



IF analysis of Iba1 red. Sample: Mouse brain, 4% PFA 12-24h. Antigen retrieval: Tris-EDTA buffer, 98°C, 20 min. Blocking buffer: 3% BSA in PBS, RT, 30 min. Primary antibody: 1: 1000, 4°C overnight. Secondary antibody: Cy3 conjugated Goat Anti-Mouse IgG, 1: 300, RT, 1h.



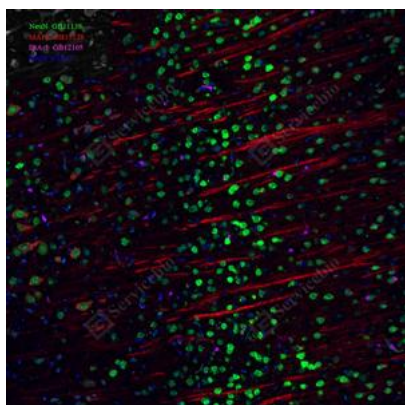
IF analysis of Iba1 red. Sample: Rat brain, 4% PFA 12-24h. Antigen retrieval: Tris-EDTA buffer, 98°C, 20 min. Blocking buffer: 3% BSA in PBS, RT, 30 min. Primary antibody: 1: 1000, 4°C overnight. Secondary antibody: Cy3 conjugated Goat Anti-Mouse IgG, 1: 300, RT, 1h.



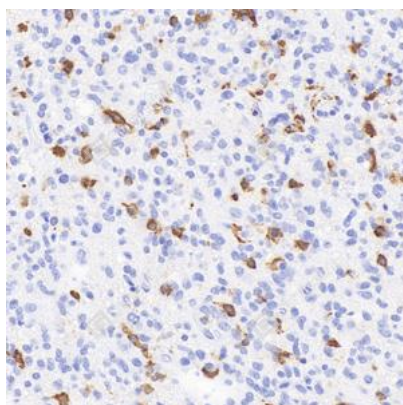
IF analysis of NeuN green. Sample: Rat hippocampus, 4% PFA 12-24h. Antigen retrieval: Tris-EDTA buffer, 98°C, 20 min. Blocking buffer: 3% BSA in PBS, RT, 30 min. Primary antibody: NeuN green 1: 3000, 4°C overnight. 488-TSA.IBA-1 red 1: 8000, 4°C overnight, iF555-TSA.MBP Rose red 1: 5000, 4°C overnight, iF594-TSA.GFAP yellow 1: 8000, 4°C overnight, iF647-TSA.

For Research Use Only

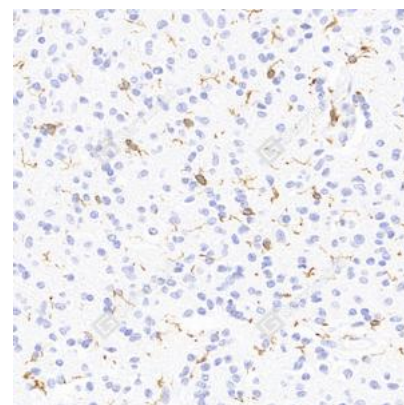
IMMUNOLOGICAL SCIENCES



IF analysis of IBA-1green.sample: Rat brain, 4% PFA 12-24h.Antigen retrieval: TE buffer , 98°C, 20min.Blocking buffer: 3% BSA in PBS , RT, 30min.Primary antibody: NeuN green 1: ?, 4°C overnight.488 conjugated Goat Anti-Rabbit IgG , 1: 400, RT, 1h.MAP2 red 1: ?, 4°C overnight,Cy3 conjugated Goat Anti-Rabbit IgG , 1: 300, RT, 1h.

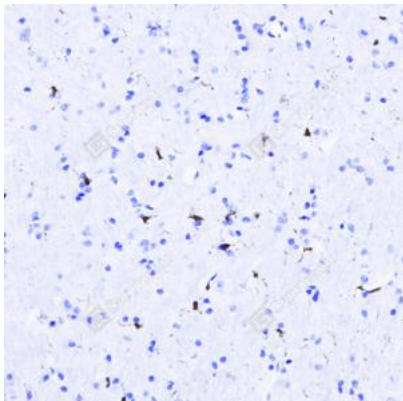


IHC analysis of Iba1.Sample: Human glioblastoma multiforme, 4% PFA 12-24h.Antigen retrieval: Citrate buffer , 98°C, 20 min.Primary antibody: 1: 500, 4°C overnight.Secondary antibody: HRP conjugated Goat Anti-Mouse IgG , 1: 200, RT, 1h.

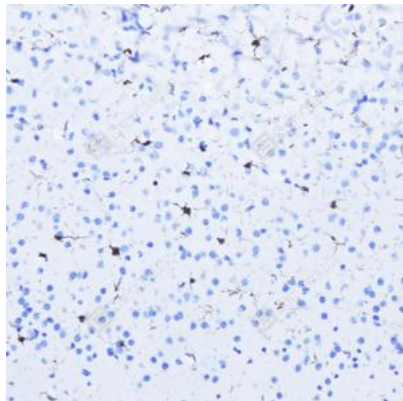


IHC analysis of Iba1.Sample: Human oligodendrocytoma, 4% PFA 12-24h.Antigen retrieval: Citrate buffer , 98°C, 20 min.Primary antibody: 1: 500, 4°C overnight.Secondary antibody: HRP conjugated Goat Anti-Mouse IgG , 1: 200, RT, 1h.

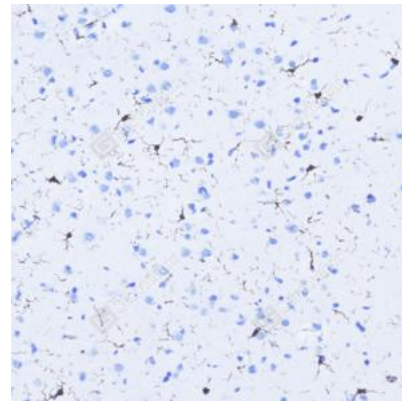
**For Research Use Only
IMMUNOLOGICAL SCIENCES**



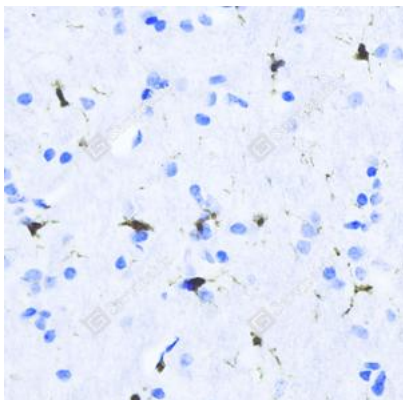
IHC analysis of Iba1. Sample: Monkey brain, 4% PFA 12-24h. Antigen retrieval: Citrate buffer , 98°C, 20 min. Primary antibody: 1: 500, 4°C overnight. Secondary antibody: HRP conjugated Goat Anti-Mouse IgG , 1: 200, RT, 1h.



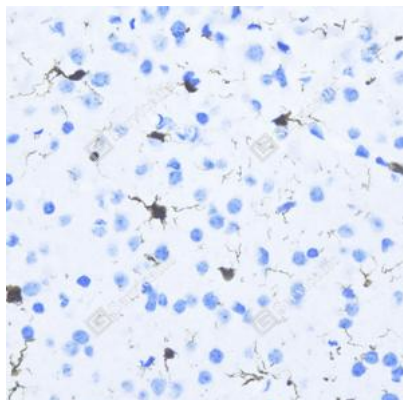
IHC analysis of Iba1. Sample: Monkey brain, 4% PFA 12-24h. Antigen retrieval: Citrate buffer , 98°C, 20 min. Primary antibody: 1: 500, 4°C overnight. Secondary antibody: HRP conjugated Goat Anti-Mouse IgG , 1: 200, RT, 1h.



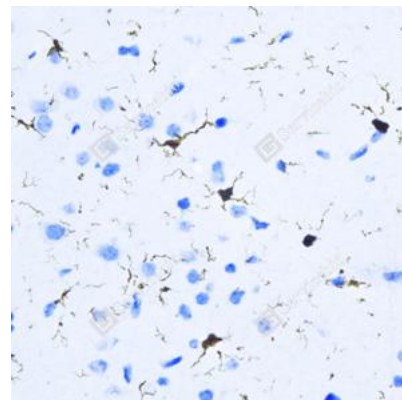
IHC analysis of Iba1. Sample: Monkey brain, 4% PFA 12-24h. Antigen retrieval: Citrate buffer , 98°C, 20 min. Primary antibody: 1: 500, 4°C overnight. Secondary antibody: HRP conjugated Goat Anti-Mouse IgG , 1: 200, RT, 1h.



IHC analysis of Iba1. Sample: Monkey brain, 4% PFA 12-24h. Antigen retrieval: Citrate buffer , 98°C, 20 min. Primary antibody: 1: 500, 4°C overnight. Secondary antibody: HRP conjugated Goat Anti-Mouse IgG , 1: 200, RT, 1h.



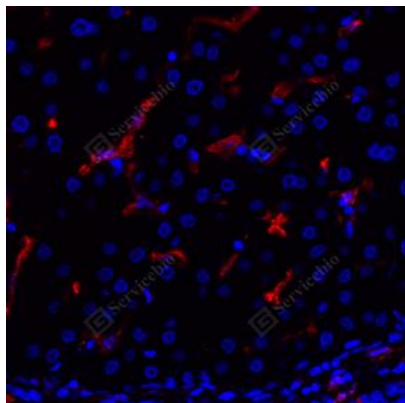
IHC analysis of Iba1. Sample: Monkey brain, 4% PFA 12-24h. Antigen retrieval: Citrate buffer , 98°C, 20 min. Primary antibody: 1: 500, 4°C overnight. Secondary antibody: HRP conjugated Goat Anti-Mouse IgG , 1: 200, RT, 1h.



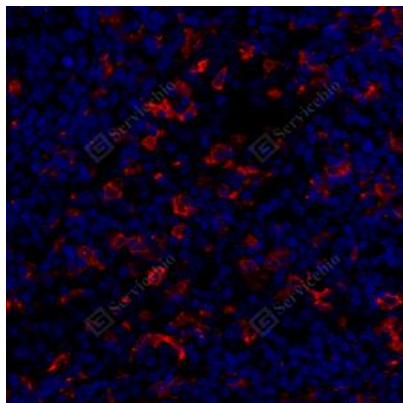
IHC analysis of Iba1. Sample: Monkey brain, 4% PFA 12-24h. Antigen retrieval: Citrate buffer , 98°C, 20 min. Primary antibody: 1: 500, 4°C overnight. Secondary antibody: HRP conjugated Goat Anti-Mouse IgG , 1: 200, RT, 1h.

For Research Use Only

IMMUNOLOGICAL SCIENCES



IF analysis of Iba1. Sample: Human liver, 4% PFA 12-24h. Antigen retrieval: Tris-EDTA buffer, 98°C, 20min. Blocking buffer: 3% BSA in PBS, RT, 30min. Primary antibody: 1: 500, 4°C overnight. Secondary antibody: Cy3 conjugated Goat Anti-Mouse IgG, 1: 300, RT, 1h.



IF analysis of Iba1. Sample: Human tonsil, 4% PFA 12-24h. Antigen retrieval: Tris-EDTA buffer, 98°C, 20min. Blocking buffer: 3% BSA in PBS, RT, 30min. Primary antibody: 1: 500, 4°C overnight. Secondary antibody: Cy3 conjugated Goat Anti-Mouse IgG, 1: 300, RT, 1h.

For Research Use Only

IMMUNOLOGICAL SCIENCES