

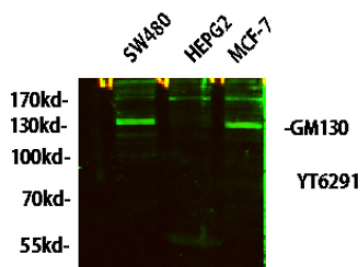


<b>Product name:</b>	GM130 Rabbit Polyclonal Antibody
<b>Cat number:</b>	ABE16150
<b>Conjugate:</b>	unconjugated
<b>Host:</b>	Rabbit
<b>Size:</b>	100 ug
<b>Synonyms:</b>	Golgin subfamily A member 2 (130 kDa cis-Golgi matrix protein;GM130;GM130 autoantigen;Golgin-95)
<b>Clone:</b>	Polyclonal
<b>Concentration:</b>	1 mg/ml
<b>Isotype:</b>	IgG
<b>Immunogen:</b>	Synthesized peptide derived from human GM130
<b>Reactivity:</b>	Human; Mouse; Rat
<b>Applications:</b>	Western Blot: 1/500 - 1/2000. ELISA: 1/10000. Not yet tested in other applications.
<b>Molecular Weight:</b>	112-130kD
<b>Background:</b>	The Golgi apparatus, which participates in glycosylation and transport of proteins and lipids in the secretory pathway, consists of a series of stacked cisternae (flattened membrane sacs). Interactions between the Golgi and microtubules are thought to be important for the reorganization of the Golgi after it fragments during mitosis. This gene encodes one of the golgins, a family of proteins localized to the Golgi. This encoded protein has been postulated to play roles in the stacking of Golgi cisternae and in vesicular transport. Several alternatively spliced transcript variants of this gene have been described, but the full-length nature of these variants has not been determined. [provided by RefSeq, Feb 2010],
<b>Form:</b>	liquid
<b>Storage:</b>	-20°C/1 year

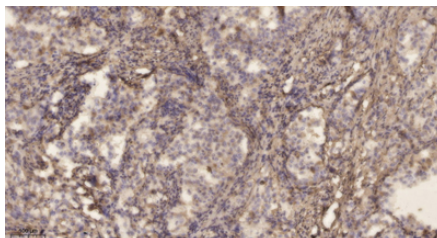
**For Research Use Only**

**IMMUNOLOGICAL SCIENCES**

Web-site: <https://immunologicalsciences.com> - E-mail: [info@immunologicalsciences.com](mailto:info@immunologicalsciences.com)



Western blot analysis of lysates from HT-29, NIH/3T3, and HepG2 cells, primary antibody was diluted at 1:1000, 4° over night, secondary antibody was diluted at 1:10000, 37° 1hour.



Immunohistochemical analysis of paraffin-embedded human lung cancer. 1, Antibody was diluted at 1:200(4° overnight). 2, Tris-EDTA,pH9.0 was used for antigen retrieval. 3,Secondary antibody was diluted at 1:200(room temperature, 45min).

**For Research Use Only**

**IMMUNOLOGICAL SCIENCES**