

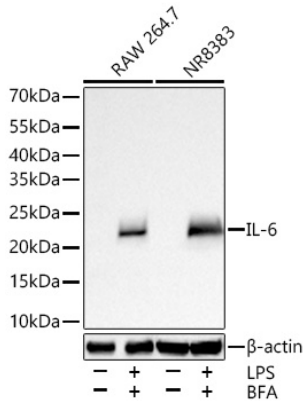


<b>Product name:</b>	IL-6 Rabbit Polyclonal Antibody
<b>Cat number:</b>	AB27935
<b>Conjugate:</b>	Unconjugated
<b>Host:</b>	Rabbit
<b>Size:</b>	100 ug
<b>Synonyms:</b>	IL6; lfnb2
<b>Concentration:</b>	1mg/ml
<b>Isotype:</b>	IgG
<b>Immunogen:</b>	Recombinant protein. This information is considered to be commercially sensitive.
<b>Reactivity:</b>	Mouse,Rat
<b>Applications:</b>	WB 1:1000 - 1:5000 IP 0.5 µg-4 µg antibody for 900 µg-1100 µg extracts of whole cells IF/ICC 1:200 - 1:800 ELISA
<b>Molecular Weight:</b>	24 kDa
<b>Purification:</b>	Affinity purification
<b>Background:</b>	Enables cytokine activity and interleukin-6 receptor binding activity. Involved in several processes, including cellular response to cytokine stimulus; positive regulation of cell communication; and positive regulation of metabolic process. Located in extracellular space. Used to study several diseases, including acute necrotizing pancreatitis; disseminated intravascular coagulation; hypertension (multiple); impotence; and steatotic liver disease. Biomarker of several diseases, including acute necrotizing pancreatitis; artery disease (multiple); auditory system disease (multiple); gastrointestinal system cancer (multiple); and lung disease (multiple). Human ortholog(s) of this gene implicated in several diseases, including autoimmune disease (multiple); eye disease (multiple); gastrointestinal system cancer (multiple); glucose metabolism disease (multiple); and periodontal disease (multiple). Orthologous to human IL6 (interleukin 6).
<b>Form:</b>	liquid
<b>Buffer:</b>	PBS containing 50% glycerol and 0.05% BSA, preserved with proclin300 or sodium azide (as specified on the Certificate of Analysis), pH 7.3.
<b>Storage:</b>	Store at -20°C. Avoid freeze / thaw cycles.

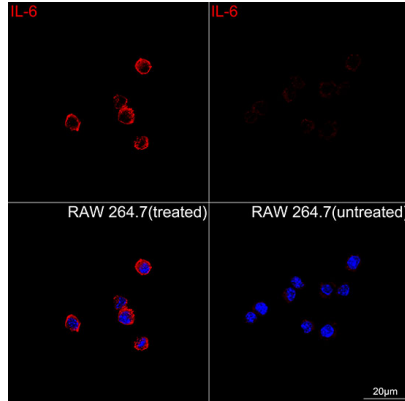
**For Research Use Only**

**IMMUNOLOGICAL SCIENCES**

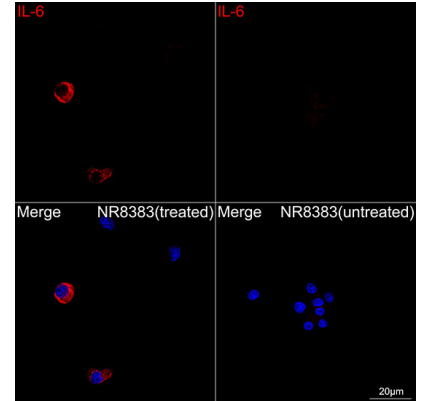
Web-site: <https://immunologicalsciences.com> - E-mail: [info@immunologicalsciences.com](mailto:info@immunologicalsciences.com)



Western blot analysis of various lysates using IL-6 Rabbit PAb at 1:5000 dilution incubated overnight at 4°C. RAW 264.7 cells and NR8383 cells were treated with LPS (1 µg/mL) and BFA (300 ng/mL) for 8 hours. Secondary antibody: HRP-conjugated Goat anti-Rabbit IgG (H+L) at 1:10000 dilution. Lysates/proteins: 30 µg per lane. Blocking buffer: 3% nonfat dry milk in TBST. Detection: ECL West Pico Plus. Exposure time: 45 s.

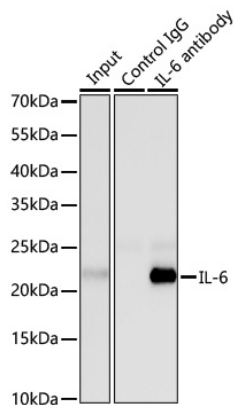


Confocal imaging of RAW 264.7 cells (treated with LPS and BFA) and RAW 264.7 cells (untreated) using IL-6 Rabbit PAb ( dilution 1:200) followed by a further incubation with Cy3-conjugated Goat Anti-Rabbit IgG (H+L) (AS007, dilution 1:500) (Red). DAPI was used for nuclear staining (Blue). Objective: 100x.



Confocal imaging of NR8383 cells (treated with LPS and BFA) and NR8383 cells (untreated) using IL-6 Rabbit pAb , dilution 1:200) followed by a further incubation with Cy3-conjugated Goat Anti-Rabbit IgG (H+L) ( , dilution 1:500) (Red). DAPI was used for nuclear staining (Blue). Objective: 100x.

**For Research Use Only**  
**IMMUNOLOGICAL SCIENCES**



Immunoprecipitation of IL-6 from 1000  $\mu$ g extracts of NR8383 cells treated with LPS (100 ng/ml, 24 h) and BFA (1  $\mu$ g/ml, 6 h) was performed using 1  $\mu$ g of IL-6 Rabbit PAb. Rabbit Control IgG was used to precipitate the Control IgG sample. IP samples were eluted with 1x reducing Laemmli Buffer. The Input lane represents 10% of the total input.

Western blot analysis of immunoprecipitates was conducted using IL-6 Rabbit PAb at a dilution of 1:10000.

**For Research Use Only**

**IMMUNOLOGICAL SCIENCES**

Web-site: <https://immunologicalsciences.com> - E-mail: [info@immunologicalsciences.com](mailto:info@immunologicalsciences.com)