

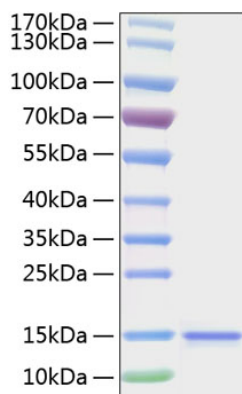


Product name:	Recombinant Human IL-15 Protein
Cat number:	GRF01236
Size:	20 ug
Synonyms:	IL15;IL-15
Molecular Weight:	13.61 kDa
Purification:	≥ 95 % as determined by SDS-PAGE.
Form:	lyophilized
Storage:	Store at -20°C. Store the lyophilized protein at -20°C to -80 °C up to 1 year from the date of receipt. After reconstitution, the protein solution is stable at -20°C for 3 months, at 2-8°C for up to 1 week.
Tags:	C-His
Source:	E. coli
Description:	High quality, high purity and low endotoxin recombinant Recombinant Human IL-15 Protein (RP01236), tested reactivity in E. coli and has been validated in SDS-PAGE. 100% guaranteed.
Endotoxin:	< 0.1 EU/μg of the protein by LAL method.
Bio-Activity:	Measured in a cell proliferation assay using HT-2 cells. The ED 50 for this effect is 1.5-5 pg/mL, corresponding to a specific activity of 2.0×10^8 - 6.67×10^8 units/mg.
Formulation:	Lyophilized from a 0.22 μm filtered solution of PBS, pH 7.4. Contact us for customized product form or formulation.
Reconstitution:	Centrifuge the vial before opening. Reconstitute to a concentration of 0.1-0.5 mg/mL in sterile distilled water. Avoid vortex or vigorously pipetting the protein. For long term storage, it is recommended to add a carrier protein or stabilizer (e.g. 0.1% BSA, 5% HSA, 10% FBS or 5% Trehalose), and aliquot the reconstituted protein solution to minimize free-thaw cycles.

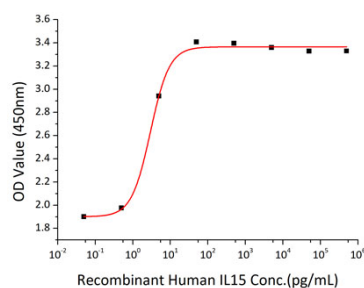
For Research Use Only

IMMUNOLOGICAL SCIENCES

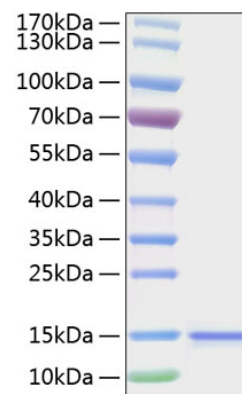
Web-site: <https://immunologicalsciences.com> - E-mail: info@immunologicalsciences.com



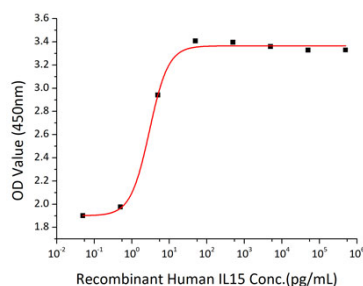
Recombinant Human IL-15 promotes the proliferation of HT-2 cells. The ED50 for this effect is 1.5-5 pg/mL, corresponding to a specific activity of 2.0×10^8 - 6.67×10^8 units/mg.



Recombinant Human IL-15 promotes the proliferation of HT-2 cells. The ED50 for this effect is 1.5-5 pg/mL, corresponding to a specific activity of 2.0×10^8 - 6.67×10^8 units/mg.



Recombinant Human IL-15 Protein was determined by SDS-PAGE under reducing conditions with Coomassie Blue.



Recombinant Human IL-15 Protein was determined by SDS-PAGE under reducing conditions with Coomassie Blue.

For Research Use Only
IMMUNOLOGICAL SCIENCES

Web-site: <https://immunologicalsciences.com> - E-mail: info@immunologicalsciences.com