

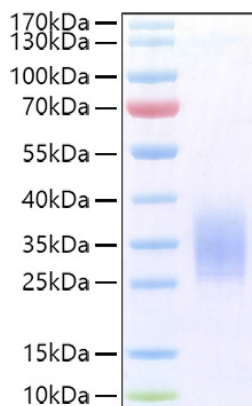


Product name:	Recombinant Human PTH1R Protein
Cat number:	GRF01369
Size:	20 ug
Synonyms:	PTH1R;PFE;PTHR;PTHR1
Molecular Weight:	19.48 kDa
Purification:	≥ 95 % as determined by SDS-PAGE; ≥95 % as determined by HPLC.
Background:	<p>Parathyroid hormone / parathyroid hormone-related peptide receptor, also known as PTH / PTHrP type I receptor, PTH/PTHr receptor, Parathyroid hormone 1 receptor, PTH1 receptor, PTH1R and PTHR, is a multi-pass membrane protein which belongs to the G-protein coupled receptor 2 family. PTH1R is expressed in most tissues. It is most abundant in kidney, bone and liver. PTH1R is expressed in high levels in bone and kidney and regulates calcium ion homeostasis through activation of adenylate cyclase and phospholipase C. In bone, PTH1R is expressed on the surface of osteoblasts. When the receptor is activated, these cells in turn stimulate osteoclasts to ultimately increase the resorption rate. PTH1R is a receptor for parathyroid hormone and for parathyroid hormone-related peptide. The activity of PTH1R is mediated by G proteins which activate adenyl cyclase and also a phosphatidylinositol-calcium second messenger system. Defects in PTH1R are the cause of Jansen metaphyseal chondrodysplasia (JMC), chondrodysplasia Blomstrand type (BOCD), enchondromatosis multiple (ENCHOM), Eiken skeletal dysplasia (EISD) and primary failure of tooth eruption (PFE).</p>
Form:	lyophilized
Storage:	Store at -20°C. Store the lyophilized protein at -20°C to -80 °C up to 1 year from the date of receipt. After reconstitution, the protein solution is stable at -20°C for 3 months, at 2-8°C for up to 1 week.
Tags:	C-His
Source:	HEK293 cells
Description:	High quality, high purity and low endotoxin recombinant Recombinant Human PTH1R Protein, tested reactivity in HEK293 cells and has been validated in SDS-PAGE. 100% guaranteed.
Endotoxin:	< 0.1 EU/μg of the protein by LAL method.
Formulation:	Lyophilized from a 0.22 μm filtered solution of PBS, pH 7.4.
Reconstitution:	Centrifuge the vial before opening. Reconstitute to a concentration of 0.1-0.5 mg/mL in sterile distilled water. Avoid vortex or vigorously pipetting the protein. For long term storage, it is recommended to add a carrier protein or stabilizer (e.g. 0.1% BSA, 5% HSA, 10% FBS or 5% Trehalose), and aliquot the reconstituted protein solution to minimize free-thaw cycles.

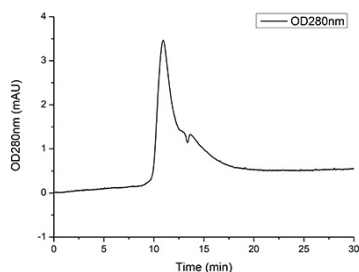
For Research Use Only

IMMUNOLOGICAL SCIENCES

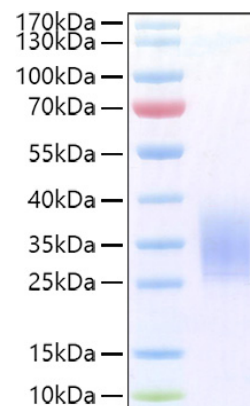
Web-site: <https://immunologicalsciences.com> - E-mail: info@immunologicalsciences.com



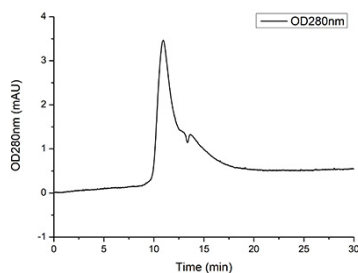
The purity of Human PTH1R/PTHR/PTHR1 Protein (Cat.GRF01369) was greater than 95% as determined by SEC-HPLC.



The purity of Human PTH1R/PTHR/PTHR1 Protein (Cat.GRF01369) was greater than 95% as determined by SEC-HPLC.



Recombinant Human PTH1R Protein was determined by SDS-PAGE under reducing conditions with Coomassie Blue.



Recombinant Human PTH1R Protein was determined by SDS-PAGE under reducing conditions with Coomassie Blue.

For Research Use Only
IMMUNOLOGICAL SCIENCES

Web-site: <https://immunologicalsciences.com> - E-mail: info@immunologicalsciences.com