



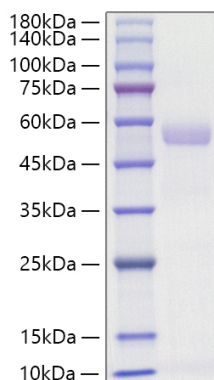
---

<b>Product name:</b>	Recombinant Mouse Osteopontin/SPP-1 Protein
<b>Cat number:</b>	GRF02806
<b>Size:</b>	20 ug
<b>Synonyms:</b>	Spp1; Eta-1; Op; Spp-1;Osteopontin; 2AR; Bone sialoprotein 1; Calcium oxalate crystal growth inhibitor protein; Early T-lymphocyte activation 1 protein; Minopontin; Secreted phosphoprotein 1; SPP-1
<b>Molecular Weight:</b>	31.59 kDa
<b>Purification:</b>	≥ 95 % as determined by SDS-PAGE;≥ 95 % as determined by HPLC.
<b>Background:</b>	Secreted phosphoprotein 1 (SPP1) expression in TAMs isolated from lung adenocarcinoma tissues and PMA-treated THP-1 cells were measured. Macrophage polarization was identified by flow cytometric analysis. Cell migration and apoptosis were assessed by Transwell migration assays and flow cytometric analysis, respectively. SPP1 is highly expressed in tumor tissues and TAMs isolated from patients with an advanced TNM stage, and also in PMA-treated THP-1 cells.
<b>Form:</b>	lyophilized
<b>Storage:</b>	Store at -20°C.Store the lyophilized protein at -20°C to -80 °C up to 1 year from the date of receipt. After reconstitution, the protein solution is stable at -20°C for 3 months, at 2-8°C for up to 1 week.
<b>Tags:</b>	C-His
<b>Source:</b>	HEK293 cells
<b>Description:</b>	High quality, high purity and low endotoxin recombinant Recombinant Mouse Osteopontin/SPP-1 Protein , tested reactivity in HEK293 cells and has been validated in SDS-PAGE.100% guaranteed.
<b>Endotoxin:</b>	< 1 EU/μg of the protein by LAL method.
<b>Bio-Activity:</b>	Measured by the ability of the immobilized protein to support the adhesion of B16 cells.When 5×10 <sup>4</sup> cells/well are added to a Recombinant Mouse (rm) Osteopontin/OPN coated plate, cell adhesion is enhanced in a dose-dependent manner after 1 hour
<b>Formulation:</b>	Lyophilized from a 0.22 μm filtered solution of PBS, pH 7.4.
<b>Reconstitution:</b>	Centrifuge the tube before opening. Reconstitute to a concentration of 0.1-0.5 mg/mL in sterile distilled water. Avoid vortex or vigorously pipetting the protein. For long term storage, it is recommended to add a carrier protein or stablizer (e.g. 0.1% BSA, 5% HSA, 10% FBS or 5% Trehalose), and aliquot the reconstituted protein solution to minimize free-thaw cycles.

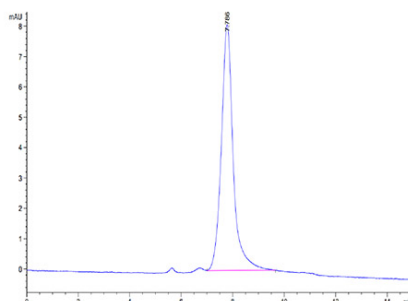
**For Research Use Only**

**IMMUNOLOGICAL SCIENCES**

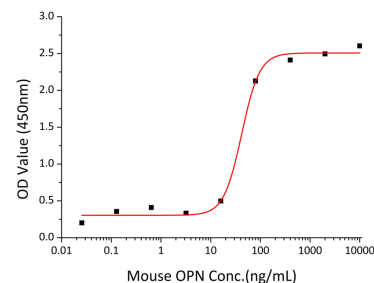
Web-site: <https://immunologicalsciences.com> - E-mail: [info@immunologicalsciences.com](mailto:info@immunologicalsciences.com)



The purity of Mouse Osteopontin/SPP1 is greater than 95% as determined by SEC-HPLC.



The purity of Mouse Osteopontin/SPP1 is greater than 95% as determined by SEC-HPLC.



immobilized protein to support the adhesion of B16 cells. When  $5 \times 10^4$  cells/well are added to a Recombinant Mouse (rm) Osteopontin/OPN coated plate, cell adhesion is enhanced in a dose-dependent manner after 1 hour incubation at 37 °C. The ED50 for this effect is 21.0-83.9 ng/mL.

**For Research Use Only**  
**IMMUNOLOGICAL SCIENCES**