

**AB-84827 Anti-PD1/PDCD1 Rabbit Polyclonal Antibody****Size:** 100 ug**Host:** Rabbit**Isotype:** IgG

**Description:** PDCD1 (Programmed cell death 1), also called PD1, encodes a cell surface receptor that is a member of the B7 superfamily involved in immunomodulation. This gene is mapped to 2q37.3. PDCD1 acts as an inhibitory molecule on T cells after interacting with its ligands PDL1 and PDL2. The PDCD1 gene contains 5 exons. This protein is expressed in pro-B-cells and is thought to play a role in their differentiation. Using flow cytometric analysis, it has been found that expression of PDCD1 was upregulated on CD16-positive and CD16-negative monocytes, but not on dendritic cells, in viremic HIV-positive patients, but not in highly active antiretroviral therapy (HAART)-treated HIV-positive patients. PDCD1 upregulation in monocytes was induced by microbial Toll-like receptor ligands and inflammatory cytokines.

**Species:** Human**Clonality:** Polyclonal

**Immunogen:** E.coli-derived human PD1 recombinant protein (Position: P101-L288). Human PD1 shares 59% amino acid (aa) sequence identity with mouse PD1.

**Form:** Lyophilized

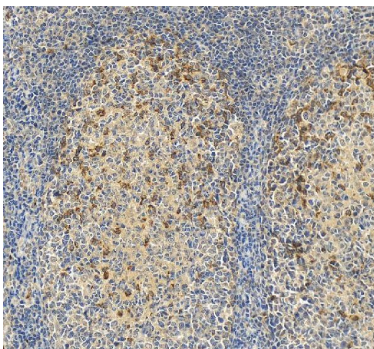
**Concentration:** Adding 0.2 ml of distilled water will yield a concentration of 500 ug/ml.

**Purification:** Immunogen affinity purified.

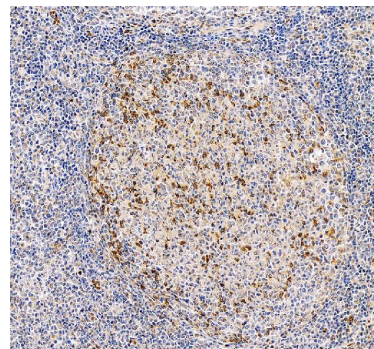
**Applications:** **Immunohistochemistry (Paraffin-embedded Section)**, 2-5ug/ml, Human

**Formulation:** Each vial contains 4 mg Trehalose, 0.9 mg NaCl and 0.2 mg Na<sub>2</sub>HPO<sub>4</sub>.

**Storage:** Store at -20°C for one year from date of receipt. After reconstitution, at 4°C for one month. It can also be aliquotted and stored frozen at -20°C for six months. Avoid repeated freeze-thaw cycles.



IHC analysis of PD-1/CD279/PDCD1 using anti-PD-1/CD279/PDCD1 antibody. PD-1/CD279/PDCD1 was detected in a paraffin-embedded section of human tonsil tissue. Heat mediated antigen retrieval was performed in EDTA buffer (pH 8.0, epitope retrieval solution). The tissue section was blocked with 10% goat serum. The tissue section was then incubated with 2 ug/ml rabbit anti-PD-1/CD279/PDCD1 Antibody overnight at 4°C. Peroxidase Conjugated Goat Anti-rabbit IgG was used as secondary antibody and incubated for 30 minutes at 37°C. The tissue section was developed using HRP Conjugated Rabbit IgG Super Vision Assay Kit with DAB as the chromogen.



IHC analysis of PD1 using anti-PD1 antibody. PD1 was detected in a paraffin-embedded section of human tonsil tissue. Heat mediated antigen retrieval was performed in EDTA buffer (pH 8.0, epitope retrieval solution). The tissue section was blocked with 10% goat serum. The tissue section was then incubated with 2 ug/ml rabbit anti-PD1 Antibody overnight at 4°C. Peroxidase Conjugated Goat Anti-rabbit IgG was used as secondary antibody and incubated for 30 minutes at 37°C. The tissue section was developed using HRP Conjugated Rabbit IgG Super Vision Assay Kit with DAB as the chromogen.

**For Research use only**  
**IMMUNOLOGICAL SCIENCES**

Web-site: [www.immunologicalsciences.com](http://www.immunologicalsciences.com) - E-Mail: [info@immunologicalsciences.com](mailto:info@immunologicalsciences.com)