



ABN01333 CD8 alpha Rabbit Polyclonal Antibody

Size: 100 ug

Concentration: 1mg/ml

Clone: POLY

Source: Rabbit

Isotype: IgG

Purification: Affinity purification

Cross-Reactivity: Human

Synonyms: CD8A; MAL; T-cell surface glycoprotein CD8 alpha chain; T-lymphocyte differentiation antigen T8/Leu-2; CD antigen CD8a

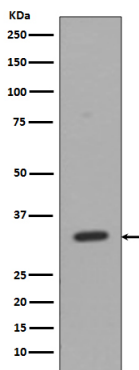
Background: Identifies cytotoxic/suppressor T-cells that interact with MHC class I bearing targets. CD8 is thought to play a role in the process of T-cell mediated killing. CD8 alpha chains binds to class I MHC molecules alpha-3 domains.

Molecular Weight: 32kDa

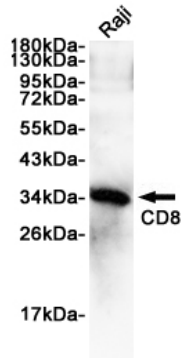
Applications: **Western Blot:** 1:500-1:1000
Immunohistochemistry (paraffin-embedded tissues): 1:50-1:100
Immunocytochemistry: 1:50-1:200
Immunofluorescence: 1:50-1:200

Buffer: Rabbit IgG in phosphate buffered saline , pH 7.4, 150mM NaCl, 0.02% sodium azide and 50% glycerol.

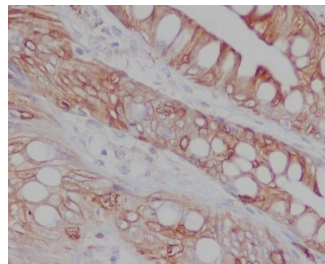
Storage: Store at 4°C short term. Aliquot and store at -20°C long term. Avoid freeze/thaw cycles.



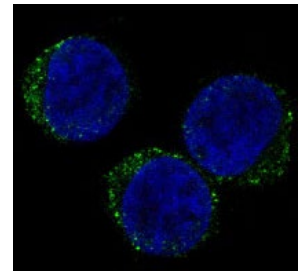
Western blot analysis of CD8 in Jurkat lysates using CD8 alpha antibody.



Western blot analysis of CD8 alpha in Raji lysates using CD8 antibody.



Immunohistochemistry analysis of paraffin-embedded Human colon using CD8 antibody. High-pressure and temperature Sodium Citrate pH 6.0 was used for antigen retrieval.



Immunofluorescence analysis of CD8 alpha in Jurkat using CD8 antibody.

Antibody retrieval protocol for Immunohistochemistry (paraffin-embedded tissues):

Antigen retrieval solution: EDTA, pH 9.0;

2 optional retrieval methods:

- ① Heat retrieval for 20-30 minutes;
- ② High-pressure retrieval, 2-3 minutes after steam generation.

For Research use only
IMMUNOLOGICAL SCIENCES