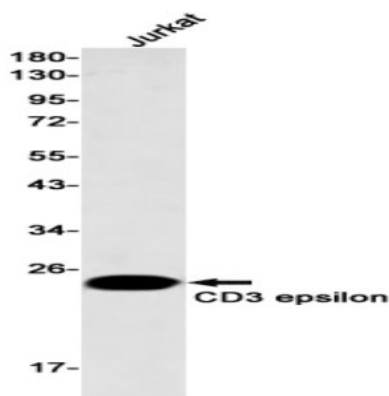
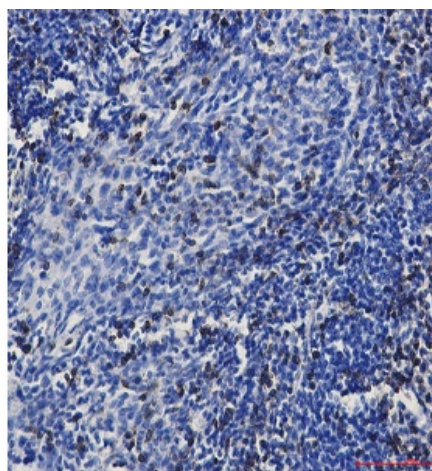


**MABN01786 CD3 epsilon Rabbit Monoclonal Antibody**

Size:	100 ug
Concentration:	1mg/ml
Clone:	IS-35
Source:	Rabbit
Isotype:	IgG
Purification:	Affinity purification
Cross-Reactivity:	Human
Synonyms:	CD3E; T3E; T-cell surface glycoprotein CD3 epsilon chain; T-cell surface antigen T3/Leu4 epsilon chain; CD3e
Background:	The CD3 complex mediates signal transduction. When T cells encounter antigens via the T cell receptor (TCR), information about the quantity and quality of antigens is relayed to the intracellular signal transduction machinery. This activation process depends mainly on CD3 (Cluster of Differentiation 3), a multiunit protein complex that directly associates with the TCR. CD3 is composed of four polypeptides: ζ , γ , ϵ and δ .
Molecular Weight:	23kDa
Applications:	Western Blot: 1:500-1:1000 Immunohistochemistry (paraffin-embedded tissues): 1:50-1:100 Immunoprecipitation: 1:20-1:50
Buffer:	50mM Tris-Glycine(pH 7.4), 0.15M NaCl, 40% Glycerol, 0.01% Sodium azide and 0.05% protective protein
Storage:	Store at 4°C short term. Aliquot and store at -20°C long term. Avoid freeze/thaw cycles.



Western blot analysis of CD3 epsilon in Jurkat lysates using CD3 epsilon antibody



Immunohistochemistry analysis of paraffin-embedded Human tonsil using CD3 epsilon antibody. High-pressure and temperature Sodium Citrate pH 6.0 was used for antigen retrieval.

Antibody retrieval protocol for Immunohistochemistry (paraffin-embedded tissues):

Antigen retrieval solution: EDTA, pH 9.0;

2 optional retrieval methods:

- ① Heat retrieval for 20-30 minutes;
- ② High-pressure retrieval, 2-3 minutes after steam generation.

For Research use only
IMMUNOLOGICAL SCIENCES

Web-site: www.immunologicalsciences.com - E-Mail: info@immunologicalsciences.com