



**MABN05895 CDX2 Mouse Monoclonal Antibody**

**Size:** 100 ug  
**Concentration:** 1mg/ml  
**Clone:** 14H6  
**Source:** Mouse  
**Isotype:** IgG  
**Purification:** Affinity purification  
**Cross-Reactivity:** Human, Mouse, Rat  
**Synonyms:** CDX2; CDX3; Homeobox protein CDX-2; CDX-3; Caudal-type homeobox protein 2

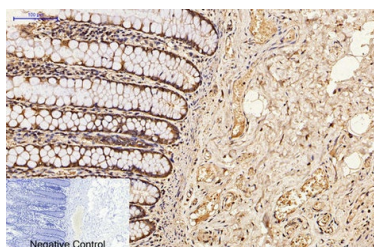
**Background:** This gene is a member of the caudal-related homeobox transcription factor gene family. The encoded protein is a major regulator of intestine-specific genes involved in cell growth and differentiation. This protein also plays a role in early embryonic development of the intestinal tract. Aberrant expression of this gene is associated with intestinal inflammation and tumorigenesis. [provided by RefSeq, Jan 2012],function:Involved in the transcriptional regulation of multiple genes expressed in the intestinal epithelium. Important in broad range of functions from early differentiation to maintenance of the intestinal epithelial lining of both the small and large intestine.,PTM:Phosphorylation of Ser-60 mediates the transactivation capacity.,similarity:Belongs to the Caudal homeobox family.,similarity:Contains 1 homeobox DNA-binding domain.

**Molecular Weight:** 42kDa

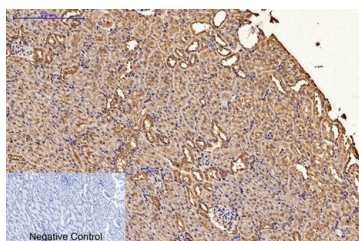
**Applications:**  
**Western Blot:** 1:500 - 1:2000  
**Immunohistochemistry:** 1:100 - 1:200  
**Immunofluorescence:** 1:100 - 1:200  
**Immunocytochemistry:** 1:100 - 1:200

**Buffer:** PBS, pH 7.4, containing 0.5%protective protein, 0.02% New type preservative N as Preservative and 50% Glycerol.

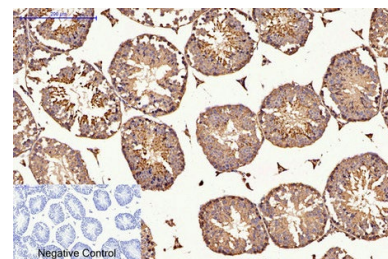
**Storage:** Store at 4°C short term. Aliquot and store at -20°C long term. Avoid freeze/thaw cycles.



Immunohistochemical analysis of paraffin-embedded Human-colon tissue  
 . 1,CDX2 Monoclonal Antibody (14H6) was diluted at 1:200 (4°C,overnight) .  
 2, Sodium citrate pH 6.0 was used for antibody retrieval (>98°C,20min) .  
 3,Secondary antibody was diluted at 1:200 (room tempeRature, 30min) .  
 Negative control was used by secondary antibody only.

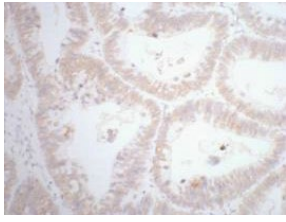


Immunohistochemical analysis of paraffin-embedded Rat-kidney tissue.  
 1,CDX2 Monoclonal Antibody (14H6) was diluted at 1:200 (4°C,overnight) .  
 2, Sodium citrate pH 6.0 was used for antibody retrieval (>98°C,20min) .  
 3,Secondary antibody was diluted at 1:200 (room tempeRature, 30min) .  
 Negative control was used by secondary antibody only.

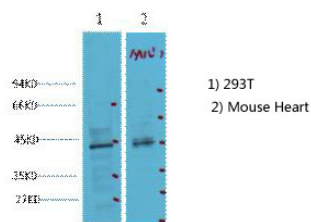


Immunohistochemical analysis of paraffin-embedded Mouse-testis tissue.  
 1,CDX2 Monoclonal Antibody (14H6) was diluted at 1:200 (4°C,overnight) .  
 2, Sodium citrate pH 6.0 was used for antibody retrieval (>98°C,20min) .  
 3,Secondary antibody was diluted at 1:200 (room tempeRature, 30min) .  
 Negative control was used by secondary antibody only.

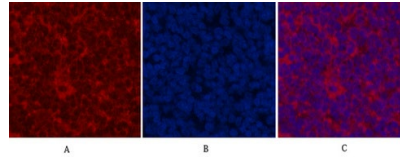
**For Research use only  
IMMUNOLOGICAL SCIENCES**



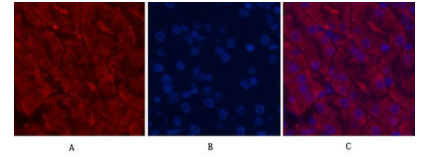
IHC staining of human rectal cancer tissue, diluted at 1:200.



Western blot analysis of  
1) 293T,  
2) Mouse Heart tissue, diluted at 1:2000. cells nucleus extracted by Minute TM Cytoplasmic and Nuclear Fractionation kit



Immunofluorescence analysis of Rat-spleen tissue. 1,CDX2 Monoclonal Antibody (14H6) (red) was diluted at 1:200 (4°C,overnight) . 2, Cy3 labeled Secondary antibody was diluted at 1:300 (room temperature, 50min) .3, Picture B: DAPI (blue) 10min. Picture A:Target. Picture B: DAPI. Picture C: merge of A+B



Immunofluorescence analysis of Mouse-kidney tissue. 1,CDX2 Monoclonal Antibody (14H6) (red) was diluted at 1:200 (4°C,overnight) . 2, Cy3 labeled Secondary antibody was diluted at 1:300 (room temperature, 50min) . 3, Picture B: DAPI (blue) 10min. Picture A:Target. Picture B: DAPI. Picture C: merge of A+B

**Antibody retrieval protocol for Immunohistochemistry (paraffin-embedded tissues):**

Antigen retrieval solution: EDTA, pH 9.0;

2 optional retrieval methods:

- ① Heat retrieval for 20-30 minutes;
- ② High-pressure retrieval, 2-3 minutes after steam generation.