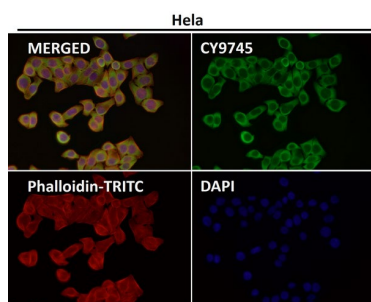
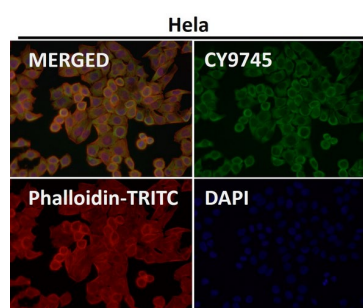


MABN84574 CD223 Rabbit Monoclonal Antibody

Size:	100 ug
Concentration:	1mg/ml
Clone:	IS-03
Source:	Rabbit
Isotype:	IgG
Purification:	Affinity purification
Cross-Reactivity:	Human
Synonyms:	CD223; Lag3; Lymphocyte activating 3; Protein FDC;;LAG 3
Background:	Lymphocyte activation gene 3 protein: Inhibitory receptor on antigen activated T-cells.
Molecular Weight:	60-80kDa
Applications:	Immunohistochemistry (paraffin-embedded tissues): 1:100-1:200 Immunocytochemistry: 1:50-1:200 Immunofluorescence: 1:50-1:200
Buffer:	Purified antibody in PBS with 0.05% sodium azide,0.05% protective protein and 50% glycerol.
Storage:	Store at 4°C short term. Aliquot and store at -20°C long term. Avoid freeze/thaw cycles.



Immunofluorescent analysis using the Antibody at 1:50 dilution.



Immunofluorescent analysis using the Antibody at 1:150 dilution.

Antibody retrieval protocol for Immunohistochemistry (paraffin-embedded tissues):

Antigen retrieval solution: EDTA, pH 9.0;

2 optional retrieval methods:

- ① Heat retrieval for 20-30 minutes;
- ② High-pressure retrieval, 2-3 minutes after steam generation.