

**MABN86618 FIBRINOGEN ALPHA CHAIN RABBIT MONOCLONAL ANTIBODY**

<b>Size:</b>	100 ug
<b>Concentration:</b>	1mg/ml
<b>Clone:</b>	IS-18
<b>Source:</b>	Rabbit
<b>Isotype:</b>	IgG
<b>Purification:</b>	Affinity purification
<b>Cross-Reactivity:</b>	Human, Mouse, Rat
<b>Synonyms:</b>	Fib2

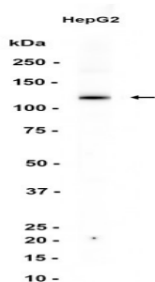
**Background:** This gene encodes the alpha subunit of the coagulation factor fibrinogen, which is a component of the blood clot. Following vascular injury, the encoded preproprotein is proteolytically processed by thrombin during the conversion of fibrinogen to fibrin. Mutations in this gene lead to several disorders, including dysfibrinogenemia, hypofibrinogenemia, afibrinogenemia and renal amyloidosis. Alternative splicing results in multiple transcript variants, at least one of which encodes an isoform that undergoes proteolytic processing.

**Molecular Weight:** 110 kDa

<b>Applications:</b>	<b>Western Blot:</b>	1:1000-1:5000
	<b>Immunohistochemistry (paraffin-embedded tissues):</b>	1:500-1:2000
	<b>Immunocytochemistry:</b>	1:20-1:50
	<b>Immunoprecipitation:</b>	1:50-1:100
	<b>Immunofluorescence:</b>	1:20-1:50
	<b>Flow Cytometry:</b>	1:20-1:50

**Buffer:** Supplied in 50mM Tris-Glycine(pH 7.4), 0.15M NaCl, 40% Glycerol, 0.01% sodium azide and 0.05% protective protein. Stable for 12 months from date of receipt.

**Storage:** Store at 4°C short term. Aliquot and store at -20°C long term. Avoid freeze/thaw cycles.



Western blot analysis of extracts from HepG2 cells using at 1:1000

**Antibody retrieval protocol for Immunohistochemistry (paraffin-embedded tissues):**

Antigen retrieval solution: EDTA, pH 9.0;

2 optional retrieval methods:

- ① Heat retrieval for 20-30 minutes;
- ② High-pressure retrieval, 2-3 minutes after steam generation.

**For Research use only**  
**IMMUNOLOGICAL SCIENCES**

Web-site: [www.immunologicalsciences.com](http://www.immunologicalsciences.com) - E-Mail: [info@immunologicalsciences.com](mailto:info@immunologicalsciences.com)