

**MABN87390 TIM 3 Rabbit Monoclonal Antibody****Size:** 100 ug**Concentration:** 1mg/ml**Clone:** IS-24**Source:** Rabbit**Isotype:** IgG**Purification:** Affinity purification**Cross-Reactivity:** Human, Mouse, Rat**Synonyms:** TIM3; CD366; KIM-3; SPTCL; TIMD3; Tim-3; TIMD-3; HAVcr-2

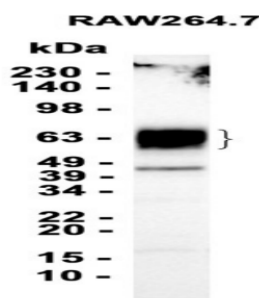
Background: The protein encoded by this gene belongs to the immunoglobulin superfamily, and TIM family of proteins. CD4-positive T helper lymphocytes can be divided into types 1 (Th1) and 2 (Th2) on the basis of their cytokine secretion patterns. Th1 cells are involved in cell-mediated immunity to intracellular pathogens and delayed-type hypersensitivity reactions, whereas, Th2 cells are involved in the control of extracellular helminthic infections and the promotion of atopic and allergic diseases. This protein is a Th1-specific cell surface protein that regulates macrophage activation, and inhibits Th1-mediated auto- and alloimmune responses, and promotes immunological tolerance.

Molecular Weight: 45-70 kDa

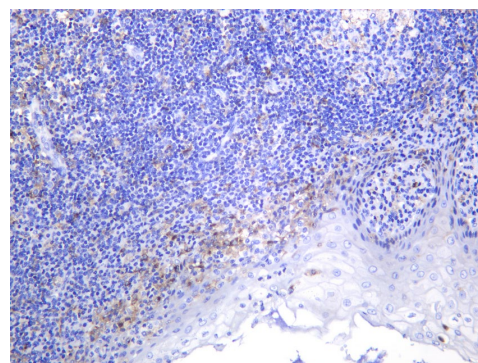
Applications: **Western Blot:** 1:500-1:2000
Immunohistochemistry (paraffin-embedded tissues): 1:200-1:1000
Immunoprecipitation: 1:50- 1:200

Buffer: Supplied in 50mM Tris-Glycine(pH 7.4), 0.15M NaCl, 40% Glycerol, 0.01% sodium azide and 0.05% protective protein. Stable for 12 months from date of receipt.

Storage: Store at 4°C short term. Aliquot and store at -20°C long term. Avoid freeze/thaw cycles.



Western blot analysis of extracts from RAW264.7 cells using TIM 3 at 1:1000



Immunohistochemical analysis of human stained with Anti TIM 3 rabbit antibody

Antibody retrieval protocol for Immunohistochemistry (paraffin-embedded tissues):

Antigen retrieval solution: EDTA, pH 9.0;

2 optional retrieval methods:

- ① Heat retrieval for 20-30 minutes;
- ② High-pressure retrieval, 2-3 minutes after steam generation.

For Research use only
IMMUNOLOGICAL SCIENCES

Web-site: www.immunologicalsciences.com - E-Mail: info@immunologicalsciences.com