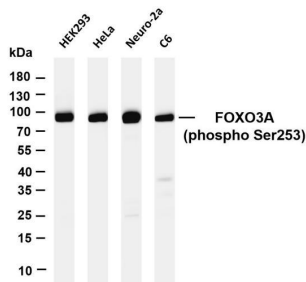


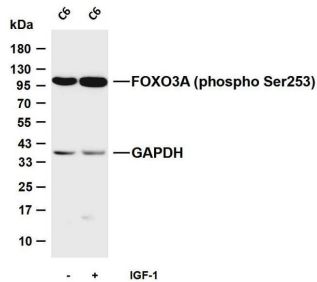


MABN87858 PHOSPHO FOXO3A (SER253) RABBIT MONOCLONAL ANTIBODY

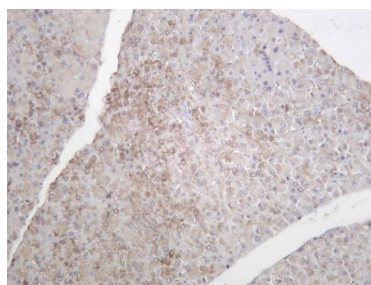
Size: 100 ug
Concentration: 1mg/ml
Clone: IS-14
Source: Rabbit
Isotype: IgG
Purification: Affinity purification
Cross-Reactivity: Human, Mouse, Rat
Synonyms: FOXO3 ;FKHRL1 ;FOXO3A ;Forkhead box protein O3 ;AF6q21 protein ;Forkhead in rhabdomyosarcoma-like 1
Background: This gene belongs to the forkhead family of transcription factors which are characterized by a distinct forkhead domain. This gene likely functions as a trigger for apoptosis through expression of genes necessary for cell death. Translocation of this gene with the MLL gene is associated with secondary acute leukemia. Alternatively spliced transcript variants encoding the same protein have been observed.
Observed MW: 36,55 kD
Applications: **Western Blot:** 1:1000-1:5000
Immunohistochemistry: 1:200-1:1000
Immunofluorescence: 1:200-1:1000
ELISA: 1:5000-1:20000
Buffer: PBS, 50% glycerol, 0.05% Proclin 300, 0.05% protective protein
Storage: Store at 4°C short term. Aliquot and store at -20°C long term. Avoid freeze/thaw cycles.



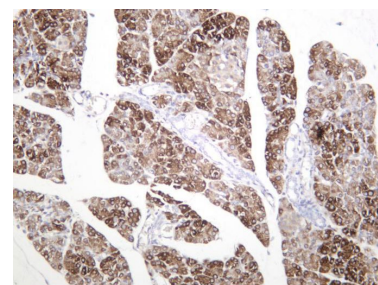
Various whole cell lysates were separated by 4-20% SDS-PAGE, and the membrane was blotted with anti-FOXO3A antibody. The HRP-conjugated Goat anti-Rabbit IgG(H + L) antibody was used to detect the antibody. Lane 1:HEK293 Lane 2: HeLa Lane 3: Neuro-2a Lane 4: C6 Predicted band size: 71kDa Observed band size: 97kDa



Various whole cell lysates were separated by 4-20% SDS-PAGE, and the membrane was blotted with anti-FOXO3A (phosphoSer253) antibody. The HRP-conjugated Goat anti-Rabbit IgG (H + L) antibody was used to detect the antibody. Lane 1: C6 Lane 2: C6 serum starvation for 24 hours followed by treatment with IGF-1 (100ng/mL) for 20 minutes Predicted band size: 71kDa Observed band size: 97kDa

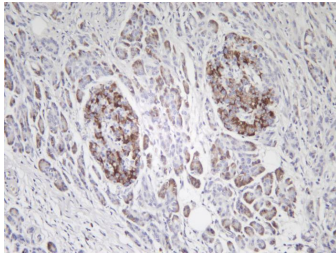


Immunohistochemical analysis of mouse pancreas was stained with anti-FOXO3A (phospho Ser253) rabbit antibody

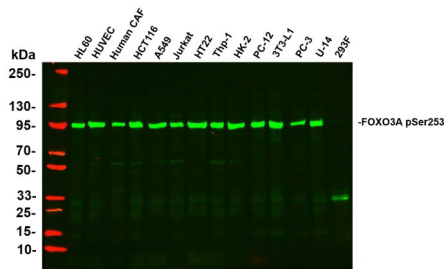


Immunohistochemical analysis of rat pancreas was stained with anti-FOXO3A (phospho Ser253) rabbit antibody

For Research use only
IMMUNOLOGICAL SCIENCES

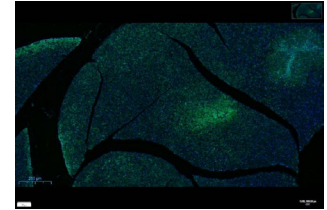


Immunohistochemical analysis of human pancreas was stained with anti-FOXO3A (phospho Ser253) rabbit antibody

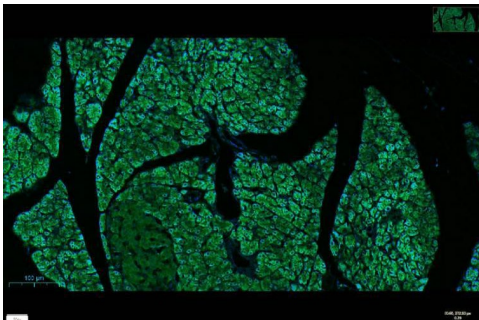


Various whole cell lysates were separated by 4-20% SDS-PAGE, and the primary antibody was used at 4°C, over night with a 1:2500 dilution .

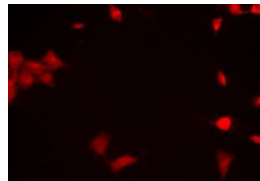
The Dylight 800-conjugated Goat anti-Rabbit antibody was used to detect the antibody. Lane1: HL60 - Human promyelocytic leukemia cell Lane2: HUVEC - Human umbilical vein endothelial cell Lane3: Human CAF - Human cancer-associated fibroblast Lane4: HCT116 - Human colorectal carcinoma Lane5: A549 - Human lung carcinoma Lane6: Jurkat - Human T lymphocyte leukemia Lane7: HT22 - Mouse hippocampal neuronal Lane8: Thp-1 - Human monocytic leukemia Lane9: HK-2 - Human proximal tubular epithelial Lane10: PC-12 - Rat adrenal pheochromocytoma Lane11: 3T3-L1 - Mouse embryonic fibroblast cells Lane12: PC-3 - Human prostate adenocarcinoma Lane13: U-14 - Mouse cervical carcinoma Lane14: 293F - HEK293 derivative, adapted for suspension culture Predicted band size: 71kDa Observed band size: 97kDa



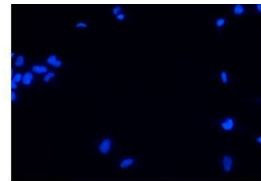
Immunofluorescence analysis of mouse pancreas was stained with anti-FOXO3A (phospho Ser253) rabbit antibody



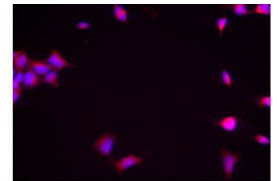
Immunofluorescence analysis of rat pancreas was stained with anti-FOXO3A (phospho Ser253) rabbit antibody



A



B



C

Immunofluorescence analysis of HEK293. Picture A: FOXO3A antibody (red). Picture B: DAPI (blue). Picture C: Merge of A+B