

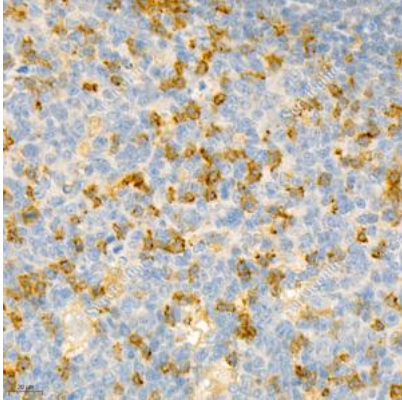


| | |
|-----------------------|--|
| Product name: | PD1 Mouse Monoclonal Antibody |
| Cat number: | MABS12338 |
| Conjugate: | unconjugated |
| Host: | Rabbit |
| Size: | 100 µL |
| Synonyms: | Protein PD-1, mPD-1, CD279, Pdcd1, Pd1, SLEB2, Systemic lupus erythematosus susceptibility 2, hSLE1, PDCD1,PD-1, PD1, SLEB2, hPD-1, hPD-I, Programmed cell death 1 |
| Clone: | IS-11 |
| Concentration: | 1mg/ml |
| Isotype: | IgG1, κ |
| Immunogen: | KLH conjugated Synthetic peptide corresponding to Mouse PD1 |
| Reactivity: | Species, Human |
| Applications: | Applications Dilution IHC/IF 1: 400-1: 2400 |
| Purification: | Affinity purification |
| Background: | Programmed cell death 1 (PD-1, also known as CD279) is an immunoinhibitory receptor that belongs to the CD28/CTLA-4 subfamily of the Ig superfamily. It is a 288 amino acid (aa) type I transmembrane protein composed of one Ig superfamily domain, a stalk, a transmembrane domain, and an intracellular domain containing an immunoreceptor tyrosine-based inhibitory motif (ITIM) as well as an immunoreceptor tyrosine-based switch motif (ITSM) . PD-1 is expressed during thymic development and is induced in a variety of hematopoietic cells in the periphery by antigen receptor signaling and cytokines. |
| Form: | Liquid |
| Buffer: | PBS with 0.15% ProClin300, 100 µg/mL BSA and 50% glycerol. |
| Storage: | Store at -20°C for one year. Avoid repeated freeze/thaw cycles. |

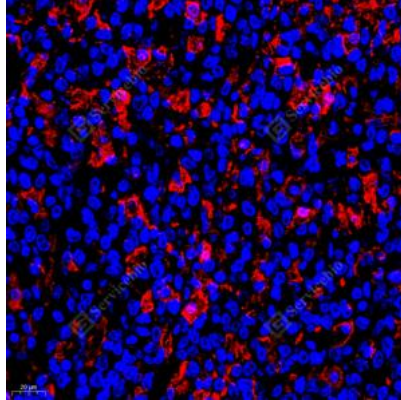
For Research Use Only

IMMUNOLOGICAL SCIENCES

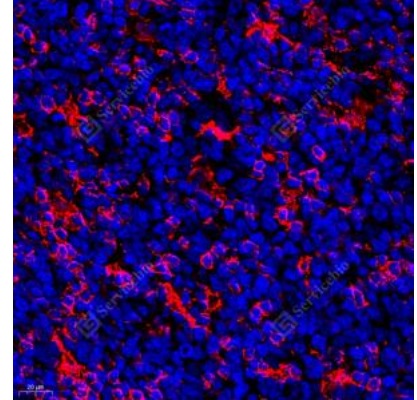
Web-site: <https://immunologicalsciences.com> - E-mail: info@immunologicalsciences.com



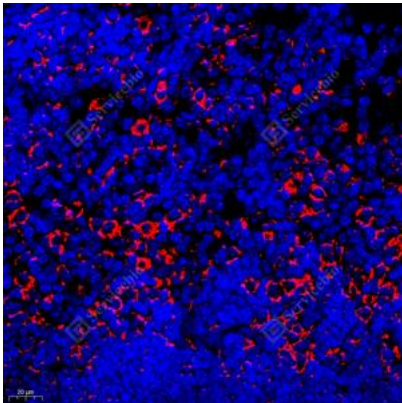
IHC analysis of PD1. Sample: Human tonsil, 4% PFA 12-24h. Antigen retrieval: Citrate buffer, pressure cooker 2 min. Primary antibody: 1: 1200, 4°C overnight. Secondary antibody: HRP conjugated Goat Anti-Mouse IgG, 1: 200, RT, 1h.



IF analysis of PD1red. Sample: Human B-cell lymphoma, 4% PFA 12-24h. Antigen retrieval: Citrate buffer, pressure cooker 2 min. Blocking buffer: 3% BSA in PBS, RT, 30min. Primary antibody: 1: 400, 4°C overnight. Secondary antibody: Cy3 conjugated Goat Anti-Mouse IgG, 1: 300, RT, 1h.



IF analysis of PD1red. Sample: Human tonsil, 4% PFA 12-24h. Antigen retrieval: Citrate buffer, pressure cooker 2 min. Blocking buffer: 3% BSA in PBS, RT, 30min. Primary antibody: 1: 400, 4°C overnight. Secondary antibody: Cy3 conjugated Goat Anti-Mouse IgG, 1: 300, RT, 1h.



IF analysis of PD1red. Sample: Mouse lymph node, 4% PFA 12-24h. Antigen retrieval: Citrate buffer, pressure cooker 2 min. Blocking buffer: 3% BSA in PBS, RT, 30min. Primary antibody: 1: 400, 4°C overnight. Secondary antibody: Cy3 conjugated Goat Anti-Mouse IgG, 1: 300, RT, 1h.

**For Research Use Only
IMMUNOLOGICAL SCIENCES**