

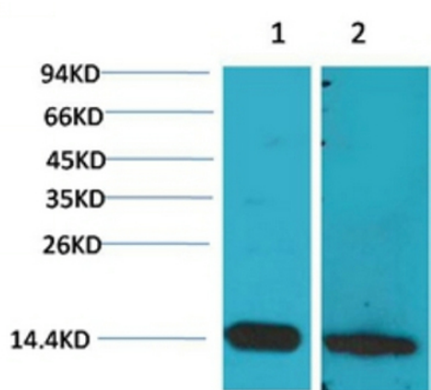


Product name:	S100 β rabbit Polyclonal Antibody
Cat number:	ABE20635
Conjugate:	unconjugated
Host:	Rabbit
Size:	100 ug
Synonyms:	Protein S100-B (S-100 protein beta chain;S-100 protein subunit beta;S100 calcium-binding protein B)
Clone:	Polyclonal
Concentration:	1 mg/ml
Isotype:	IgG
Immunogen:	Recombinant Protein of S100 β
Reactivity:	Human;Rat;Mouse
Applications:	Western Blot: 1/500 - 1/2000. Immunohistochemistry: 1/100 - 1/300. ELISA: 1/40000. Not yet tested in other applications.
Molecular Weight:	11kD
Background:	The protein encoded by this gene is a member of the S100 family of proteins containing 2 EF-hand calcium-binding motifs. S100 proteins are localized in the cytoplasm and/or nucleus of a wide range of cells, and involved in the regulation of a number of cellular processes such as cell cycle progression and differentiation. S100 genes include at least 13 members which are located as a cluster on chromosome 1q21; however, this gene is located at 21q22.3. This protein may function in Neurite extension, proliferation of melanoma cells, stimulation of Ca ²⁺ fluxes, inhibition of PKC-mediated phosphorylation, astrocytosis and axonal proliferation, and inhibition of microtubule assembly. Chromosomal rearrangements and altered expression of this gene have been implicated in several neurological, neoplastic, and other types of diseases, including Alzheimer's disease, Down's syndrome, epilepsy
Form:	liquid
Storage:	-20°C/1 year

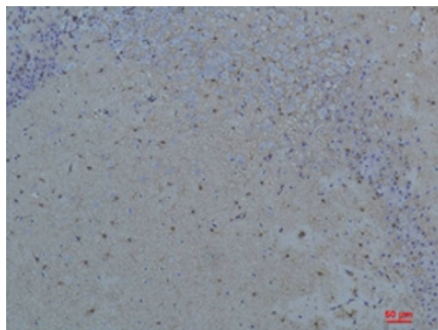
For Research Use Only

IMMUNOLOGICAL SCIENCES

Web-site: <https://immunologicalsciences.com> - E-mail: info@immunologicalsciences.com



Western blot analysis of 1) Mouse Brain Tissue, 2) Rat Brain Tissue with S100 β Rabbit pAb diluted at 1:2,000.



Immunohistochemical analysis of paraffin-embedded Rat Brain Tissue using S100 β Rabbit pAb diluted at 1:200.

For Research Use Only

IMMUNOLOGICAL SCIENCES

Web-site: <https://immunologicalsciences.com> - E-mail: info@immunologicalsciences.com