

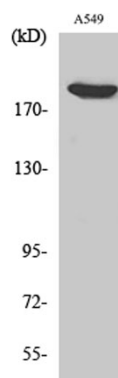


<b>Product name:</b>	ZC3H13 Rabbit Polyclonal Antibody
<b>Cat number:</b>	ABE3727
<b>Conjugate:</b>	unconjugated
<b>Host:</b>	Rabbit
<b>Size:</b>	100 ug
<b>Synonyms:</b>	ZC3H13; KIAA0853; Zinc finger CCCH domain-containing protein 13
<b>Clone:</b>	Polyclonal
<b>Concentration:</b>	1 mg/ml
<b>Isotype:</b>	IgG
<b>Immunogen:</b>	The antiserum was produced against synthesized peptide derived from human ZC3H13. AA range:1571-1620
<b>Reactivity:</b>	Human; Mouse
<b>Applications:</b>	Western Blot: 1/500 - 1/2000. ELISA: 1/10000. Not yet tested in other applications.
<b>Molecular Weight:</b>	200kD
<b>Background:</b>	PTM:Phosphorylated upon DNA damage, probably by ATM or ATR.,similarity:Contains 1 C3H1-type zinc finger.,
<b>Form:</b>	Liquid
<b>Storage:</b>	-20°C/1 year

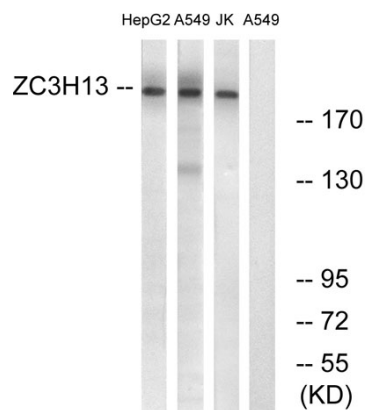
**For Research Use Only**

**IMMUNOLOGICAL SCIENCES**

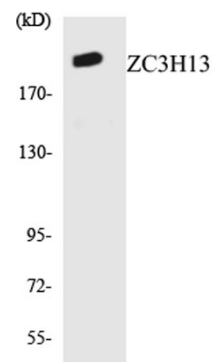
Web-site: <https://immunologicalsciences.com> - E-mail: [info@immunologicalsciences.com](mailto:info@immunologicalsciences.com)



Western Blot analysis of various cells using ZC3H13 Polyclonal Antibody. Secondary antibody was diluted at 1:20000



Western blot analysis of lysates from A549, Jurkat, HepG2 cells, using ZC3H13 Polyclonal Antibody. The lane on the right is blocked with the synthesized peptide.



Western blot analysis of the lysates from HUVEC cells using ZC3H13 Antibody.

**For Research Use Only**  
**IMMUNOLOGICAL SCIENCES**