

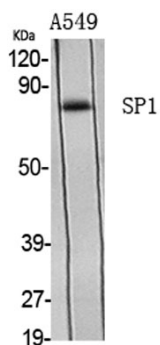


|                          |   |
|--------------------------|---|
| <b>Product name:</b>     | Sp1 Rabbit Polyclonal Antibody  |
| <b>Cat number:</b>       | ABE3482   |
| <b>Conjugate:</b>        | Unconjugated  |
| <b>Size:</b>             | 100 ug  |
| <b>Clone:</b>            | Polyclonal  |
| <b>Concentration:</b>    | 1 mg/ml   |
| <b>Host:</b>             | Rabbit  |
| <b>Isotype:</b>          | IgG   |
| <b>Immunogen:</b>        | The antiserum was produced against synthesized peptide derived from human SP1. AA range:706-755   |
| <b>Reactivity:</b>       | Human;Mouse;Rat   |
| <b>Applications:</b>     | Western Blot: 1/500 - 1/2000. Immunohistochemistry: 1/100 - 1/300. Immunofluorescence: 1/200 - 1/1000. ELISA: 1/20000. Not yet tested in other applications.  |
| <b>Molecular Weight:</b> | 85kD  |
| <b>Purification:</b>     | The antibody was affinity-purified from rabbit antiserum by affinity-chromatography using epitope-specific immunogen.   |
| <b>Form:</b>             | liquid  |
| <b>Buffer:</b>           | Liquid in PBS containing 50% glycerol, 0.5% BSA and 0.02% sodium azide.   |
| <b>Storage:</b>          | -20°C/1 year  |
| <b>Synonyms:</b>         | SP1; TSFP1; Transcription factor Sp1  |
| <b>Background:</b>       | The protein encoded by this gene is a zinc finger transcription factor that binds to GC-rich motifs of many promoters. The encoded protein is involved in many cellular processes, including cell differentiation, cell growth, apoptosis, immune responses, response to DNA damage, and chromatin remodeling. Post-translational modifications such as phosphorylation, acetylation, glycosylation, and proteolytic processing significantly affect the activity of this protein, which can be an activator or a repressor. Three transcript variants encoding different isoforms have been found for this gene. [provided by RefSeq, Nov 2014], |

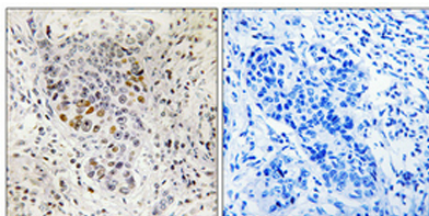
**For Research Use Only**

**IMMUNOLOGICAL SCIENCES**

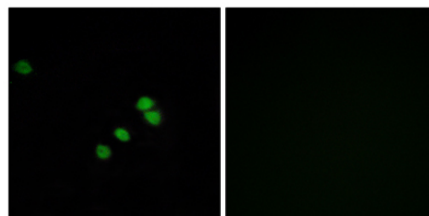
Web-site: <https://immunologicalsciences.com> - E-mail: [info@immunologicalsciences.com](mailto:info@immunologicalsciences.com)



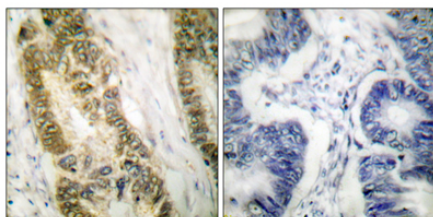
Western Blot analysis of various cells using Sp1 Polyclonal Antibody



Immunohistochemical analysis of paraffin-embedded Human lung cancer. Antibody was diluted at 1:100(4° overnight). High-pressure and temperature Tris-EDTA,pH8.0 was used for antigen retrieval. Negative contrl (right) obtained from antibody was pre-absorbe



Immunofluorescence analysis of HepG2 cells, using SP1 Antibody. The picture on the right is blocked with the synthesized peptide.



Immunohistochemistry analysis of paraffin-embedded human colon carcinoma tissue, using SP1 Antibody. The picture on the right is blocked with the synthesized peptide.

**For Research Use Only**

**IMMUNOLOGICAL SCIENCES**