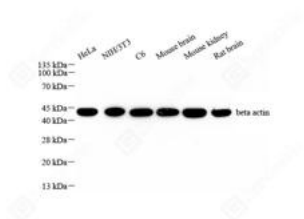


Product name:	Anti-beta Actin Rabbit Polyclonal Antibody
Cat number:	ABS11001
Conjugate:	unconjugated
Size:	100 µL
Clone:	POLY
Concentration:	1mg/ml
Host:	Rabbit
Isotype:	IgG
Immunogen:	KLH conjugated Synthetic peptide corresponding to Mouse beta-Actin
Reactivity:	Species, Human, Mouse, Rat
Applications:	WB 1: 1000-1: 2000 IHC/IF 1: 500-1: 1000 ICC/IF 1: 300-1: 1000
Molecular Weight:	42 kDa
Purification:	Affinity purification
Form:	Liquid
Buffer:	PBS with 0.15% ProClin300, 100 µg/mL BSA and 50% glycerol.
Storage:	Store at -20°C for one year. Avoid repeated freeze/thaw cycles.
Synonyms:	ACTB, BRWS1, PS1TP5BP1, Beta-actin, actin beta, Beta Cytoskeletal Actin, β-Actin
Background:	Actins are highly conserved proteins that are involved in various types of cell motility and are ubiquitously expressed in all eukaryotic cells. In vertebrates 3 main groups of actin isoforms, alpha, beta and gamma have been identified. The alpha actins are found in muscle tissues and are a major constituent of the contractile apparatus. The beta and gamma actins coexist in most cell types as components of the cytoskeleton and as mediators of internal cell motility.

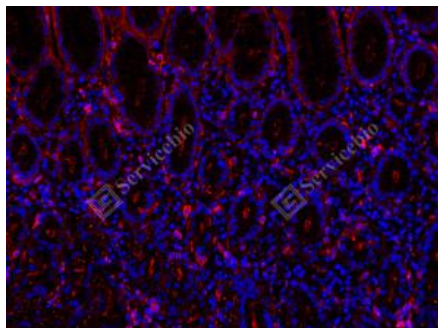
For Research Use Only

IMMUNOLOGICAL SCIENCES

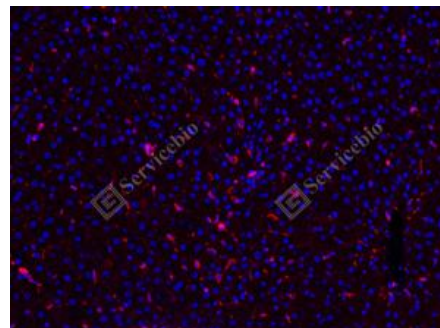
Web-site: <https://immunologicalsciences.com> - E-mail: info@immunologicalsciences.com



WB analysis of beta Actin. Sample: Protein treated by RIPA Lysis Buffer. Blocking buffer: 3% Nonfat dry milk in TBST, RT, 1h. Primary antibody: 1: 1000, 4°C overnight. Secondary antibody: HRP conjugated Goat Anti-Rabbit IgG , 1: 5000, RT, 1h.



IF analysis of beta Actin red. Sample: Human colon cancer, 4% PFA 12-24h. Antigen retrieval: Tris-EDTA buffer , 98°C, 20min. Blocking buffer: 3% BSA in PBS, RT, 30min. Primary antibody: 1: 1000, 4°C overnight. Secondary antibody: Cy3 conjugated Goat Anti-Rabbit IgG , 1: 300, RT, 1h.



IF analysis of beta Actin red. Sample: Rat liver, 4% PFA 12-24h. Antigen retrieval: Tris-EDTA buffer , 98°C, 20min. Blocking buffer: 3% BSA in PBS, RT, 30min. Primary antibody: 1: 1000, 4°C overnight. Secondary antibody: Cy3 conjugated Goat Anti-Rabbit IgG , 1: 300, RT, 1h.

For Research Use Only
IMMUNOLOGICAL SCIENCES