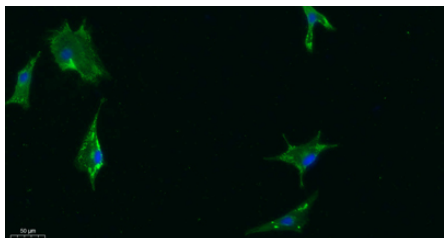

Product name:	GRP78 BiP rabbit pAb
Cat number:	ABE8607
Conjugate:	unconjugated
Size:	100 ug
Clone:	Polyclonal
Concentration:	1 mg/ml
Host:	Rabbit
Isotype:	IgG
Immunogen:	Synthetic peptide from human protein at AA range: 505-570
Reactivity:	Human;Mouse;Rat;Fish
Applications:	Western Blot: 1/500 - 1/2000.IHC-p/f:1:50-300. ELISA 1:10000-20000
Molecular Weight:	78kD
Form:	liquid
Storage:	-20°C/1 year
Synonyms:	78 kDa glucose-regulated protein (GRP-78) (Endoplasmic reticulum lumenal Ca(2+)-binding protein grp78) (Heat shock 70 kDa protein 5) (Immunoglobulin heavy chain-binding protein) (BiP)
Background:	The protein encoded by this gene is a member of the heat shock protein 70 (HSP70) family. It is localized in the lumen of the endoplasmic reticulum (ER), and is involved in the folding and assembly of proteins in the ER. As this protein interacts with many ER proteins, it may play a key role in monitoring protein transport through the cell.[provided by RefSeq, Sep 2010],

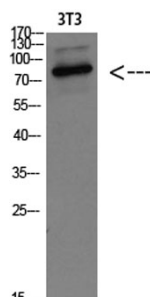
For Research Use Only

IMMUNOLOGICAL SCIENCES

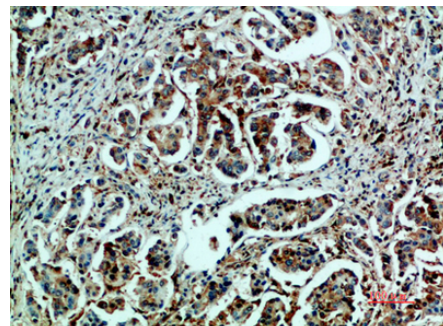
Web-site: <https://immunologicalsciences.com> - E-mail: info@immunologicalsciences.com



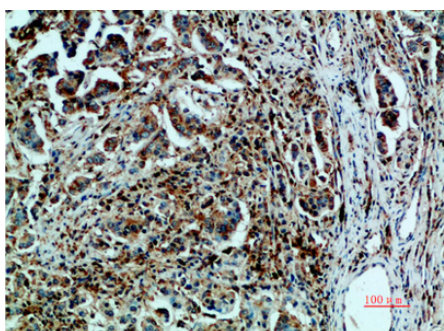
Immunofluorescence analysis of A549.
1,primary Antibody was diluted at 1:200(4°C overnight). 2, Goat Anti Rabbit IgG (H&L;) - Alexa Fluor 488 Secondary antibody was diluted at 1:1000(room temperature, 50min).3, Picture B: DAPI(blue) 10min.



Western blot analysis of 3T3 Cell Lysate, antibody was diluted at 1:1000. Secondary antibody(catalog#:RS0002) was diluted at 1:20000



Immunohistochemical analysis of paraffin-embedded human-breast-cancer, antibody was diluted at 1:200



Immunohistochemical analysis of paraffin-embedded human-breast-cancer, antibody was diluted at 1:200

**For Research Use Only
IMMUNOLOGICAL SCIENCES**