

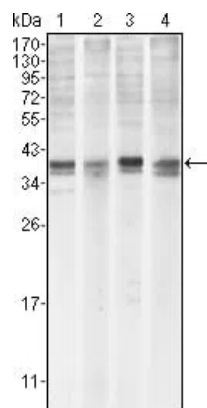


Product name:	MCL-1 Mouse Monoclonal Antibody
Cat number:	MABN80516
Conjugate:	Unconjugated
Size:	100µL
Concentration:	1mg/ml
Host:	Mouse
Isotype:	Mouse IgG1
Reactivity:	Human
Applications:	WB 1:500-1:2000,IHC 1:200-1:1000,ICC 1:200-1:1000,ELISA 1:5000-1:20000
Molecular Weight:	37kDa
Purification:	Affinity purification
Form:	liquid
Buffer:	Purified antibody in PBS with 0.05% sodium azide
Storage:	Store at 4°C short term. Aliquot and store at -20°C long term. Avoid freeze/thaw cycles.
Synonyms:	EAT, MCL1L, MCL1S
Source:	Mouse
Background:	Mcl-1 (Myeloid cell leukemia-1) is Bcl-2-related and was identified as an early-induction gene that increased in expression during the differentiation of human myeloblastic leukemia cell ML-1, or exposure to different DNA damaging agents. The level of Mcl-1 is decreased in peripheral B lymphocytes undergoing apoptosis following treatment with apoptotic stimuli such as TGF-alpha 1 and forskolin. Expression of Mcl-1 is able to delay apoptosis induced by over-expression of c-myc in CHO 5AHSmyc cells. In hematopoietic FDC-P1 cells, Mcl-1 interacts with another Bcl-2-related protein, Bax, and prolongs cell viability after treatment with different apoptotic reagents. This monoclonal antibody detected a 37kd MCL1 in BCBL-1 cell lysate.

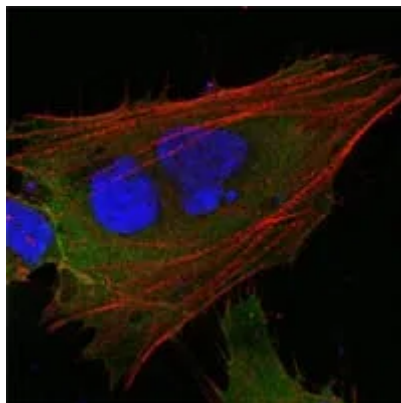
For Research Use Only

IMMUNOLOGICAL SCIENCES

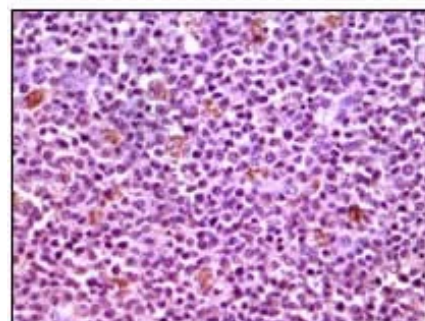
Web-site: <https://immunologicalsciences.com> - E-mail: info@immunologicalsciences.com



Western blot analysis using MCL1 mouse mAb against HeLa (1), BCBL-1 (2), Jurkat (3) and HL60 (4) cell lysate.



Confocal Immunofluorescence analysis of HepG2 cells using MCL1 mouse mAb (green). Red: Actin filaments have been labeled with DY-554 phalloidin. Blue: DRAQ5 fluorescent DNA dye.



Immunohistochemical analysis of paraffin-embedded human lymphnode tissues using MCL1 mouse mAb with DAB staining.

**For Research Use Only
IMMUNOLOGICAL SCIENCES**