

Product name:	DRP1 (phospho-Ser616) Rabbit Polyclonal antibody
Cat number:	ABE16895
Conjugate:	unconjugated
Size:	100 ug
Clone:	Polyclonal
Concentration:	1 mg/ml
Host:	Rabbit
Isotype:	IgG
Immunogen:	Synthesized phospho peptide around human DRP1 (Ser616)
Reactivity:	Human;Mouse;Rat
Applications:	WB 1:1000-2000
Molecular Weight:	80kD
Form:	liquid
Storage:	-20°C/1 year
Synonyms:	Dynamin-1-like protein (EC 3.6.5.5) (Dnm1p/Vps1p-like protein) (DVLP) (Dynamin family member proline-rich carboxyl-terminal domain less) (Dymple) (Dynamin-like protein) (Dynamin-like protein 4)

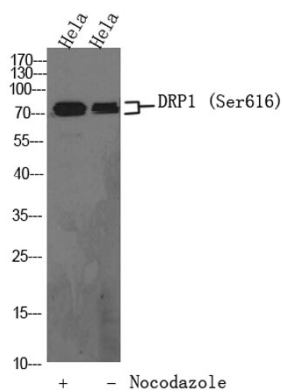
Background:

This gene encodes a member of the dynamin superfamily of GTPases. The encoded protein mediates mitochondrial and peroxisomal division, and is involved in developmentally regulated apoptosis and programmed necrosis. Dysfunction of this gene is implicated in several neurological disorders, including Alzheimer's disease. Mutations in this gene are associated with the autosomal dominant disorder, encephalopathy, lethal, due to defective mitochondrial and peroxisomal fission (EMPF). Alternative splicing results in multiple transcript variants encoding different isoforms. [provided by

For Research Use Only

IMMUNOLOGICAL SCIENCES

Web-site: <https://immunologicalsciences.com> - E-mail: info@immunologicalsciences.com



Western Blot analysis of hela cells, hela cell treated or untreated by Nocodazole at 100 ng/ml 17h. Primary Antibody was diluted at 1:1000. Secondary antibody was diluted at 1:10000

For Research Use Only
IMMUNOLOGICAL SCIENCES