



Product name:	TYRP1 Rabbit Monoclonal Antibody- Conjugated Alexa Fluor 647
Cat number:	MABN87645-647
Conjugate:	Unconjugated
Size:	100µL
Clone:	T27
Concentration:	1mg/ml
Host:	Rabbit
Isotype:	IgG
Immunogen:	A synthetic peptide of human TYRP1
Reactivity:	Human,Mouse
Applications:	WB 1:2000-1:20000,IHC 1:200-1:1000,ICC/IF 1:100-1:200,FC 1:20-1:50
Molecular Weight:	75 kDa
Purification:	Affinity purification
Form:	liquid
Buffer:	Supplied in 50mM Tris-Glycine(pH 7.4), 0.15M NaCl, 40% Glycerol, 0.01% sodium azide and 0.05% protective protein. Stable for 12 months from date of receipt.
Storage:	Store at 4°C short term. Aliquot and store at -20°C long term. Avoid freeze/thaw cycles.
Synonyms:	TRP; CAS2; CATB; GP75; OCA3; TRP1; TYRP; b-PROTEIN
Source:	Rabbit

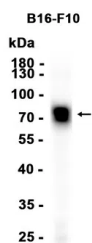
Background:

This gene encodes a melanosomal enzyme that belongs to the tyrosinase family and plays an important role in the melanin biosynthetic pathway. Defects in this gene are the cause of rufous oculocutaneous albinism and oculocutaneous albinism type III. [provided by RefSeq, Mar 2009]

For Research Use Only

IMMUNOLOGICAL SCIENCES

Web-site: <https://immunologicalsciences.com> - E-mail: info@immunologicalsciences.com



Western blot analysis of extracts from
B16-F10 cells using TYRP1 Rabbit
Monoclonal Antibody at 1:5000

For Research Use Only
IMMUNOLOGICAL SCIENCES