



<b>Cat. No:</b>	MAB-94784
<b>Conjugate:</b>	Unconjugated
<b>Size:</b>	100 ug
<b>Clone:</b>	ARC56803
<b>Concentration:</b>	1mg/ml
<b>Host:</b>	Rabbit
<b>Isotype:</b>	IgG
<b>Immunogen:</b>	A synthetic phosphorylated peptide around S345 of human Phospho-Chk1-S345
<b>Reactivity:</b>	Human, Mouse
<b>Applications:</b>	Western Blot: 1:1000 - 1:5000
<b>Molecular Weight:</b>	56kDa
<b>Purification:</b>	Aff. Pur.

**Background:**

The protein encoded by this gene belongs to the Ser/Thr protein kinase family. It is required for checkpoint mediated cell cycle arrest in response to DNA damage or the presence of unreplcated DNA. This protein acts to integrate signals from ATM and ATR, two cell cycle proteins involved in DNA damage responses, that also associate with chromatin in meiotic prophase I. Phosphorylation of CDC25A protein phosphatase by this protein is required for cells to delay cell cycle progression in response to doublestrand DNA breaks. Several alternatively spliced transcript variants have been found for this gene.

**Form:**

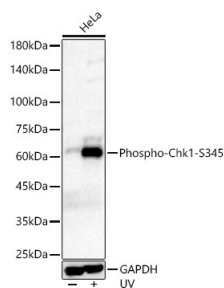
Liquid

**Buffer:**

PBS with 0.05% proclin300, 0.05% BSA, 50% glycerol, pH7.3.

**Storage:**

Store at -20°C. Avoid freeze / thaw cycles.

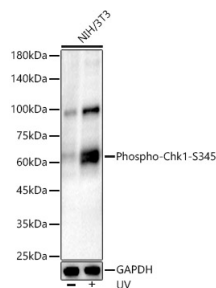


Western blot analysis of extracts from HeLa cells, using Phospho-Chk1-S345 Rabbit mAb.

at 1:20000 dilution. HeLa cells were treated by UV at room temperature for 15-30 minutes.

Secondary antibody: HRP Goat Anti-Rabbit IgG (H+L) at 1:10000 dilution.  
Lysates/proteins: 25µg per lane.  
Blocking buffer: 3% nonfat dry milk in TBST.

Detection: ECL West Pico Plus.  
Exposure time: 180s.



Western blot analysis of extracts from NIH/3T3 cells, using Phospho-Chk1-S345 Rabbit mAb.

at 1:2000 dilution. NIH/3T3 cells were treated by UV at room temperature for 15-30 minutes.

Secondary antibody: HRP Goat Anti-Rabbit IgG (H+L) at 1:10000 dilution.  
Lysates/proteins: 25µg per lane.  
Blocking buffer: 3% nonfat dry milk in TBST.

Detection: ECL West Pico Plus.  
Exposure time: 180s.