

Product name:	IL-6 Rabbit Polyclonal Antibody
Cat number:	ABN04151
Conjugate:	Unconjugated
Size:	100µL
Clone:	POLY
Concentration:	1mg/ml
Host:	Rabbit
Isotype:	IgG
Immunogen:	Recombinant protein of human IL6.
Reactivity:	Human,Mouse,Rat
Applications:	WB 1:500-1:1000,IHC 1:50-1:100,ICC/IF 1:50-1:200
Molecular Weight:	24 kDa
Purification:	Affinity purification
Form:	liquid
Buffer:	Liquid in PBS containing 50% glycerol, 0.5% protective protein and 0.02% sodium azide, pH 7.3.
Storage:	Store at 4°C short term. Aliquot and store at -20°C long term. Avoid freeze/thaw cycles.
Synonyms:	IL6; IFNB2; Interleukin-6; IL-6; B-cell stimulatory factor 2; BSF-2; CTL differentiation factor; CDF; Hybridoma growth factor; Interferon beta-2; IFN-beta-2
Source:	Rabbit

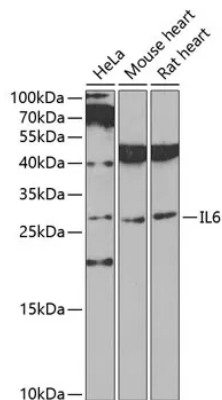
Background:

Interleukine 6 (IL-6) is a cytokine produced primarily by stimulated monocytes, fibroblasts and epithelial cells. It has a wide variety of biological functions through activating a cell surface signaling assembly composed of IL6, IL6RA, and the shared signaling receptor gp130. The cytokine plays an essential role in the final differentiation of b-cells into Ig secreting cells, and induces myeloma, plasmacytoma growth, nerve cells differentiations. In addition, IL-6 is an important regulator of acute phase reaction.

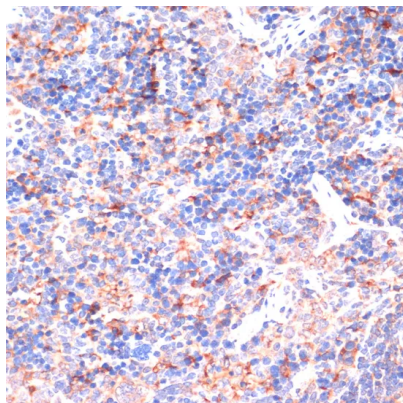
For Research Use Only

IMMUNOLOGICAL SCIENCES

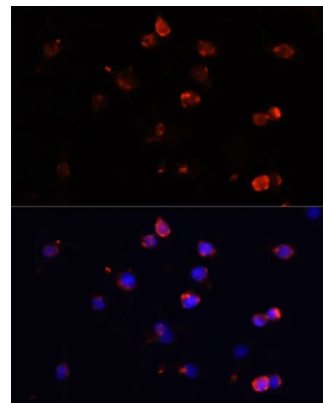
Web-site: <https://immunologicalsciences.com> - E-mail: info@immunologicalsciences.com



Western blot analysis of IL-6 in various cell lines lysates using IL-6 antibody.



Immunohistochemistry analysis of paraffin-embedded mouse spleen using IL-6 antibody. High-pressure and temperature Sodium Citrate pH 6.0 was used for antigen retrieval.



Immunofluorescence analysis of IL-6 in RAW264.7 cells using IL-6 antibody, and DAPI (blue).

**For Research Use Only
IMMUNOLOGICAL SCIENCES**