

Product name:	RhoA Rabbit Polyclonal Antibody
Cat number:	ABN03398
Conjugate:	Unconjugated
Size:	100µL
Clone:	POLY
Concentration:	1mg/ml
Host:	Rabbit
Isotype:	IgG
Immunogen:	The antiserum was produced against synthesized peptide derived from human RhoA. AA range:144-193
Reactivity:	Human,Mouse,Rat
Applications:	WB 1:500-1:1000,IHC 1:50-1:100,ICC/IF 1:50-1:200,ELISA 1:5000-1:20000
Molecular Weight:	22 kDa
Purification:	Affinity purification
Form:	liquid
Buffer:	Liquid in PBS containing 50% glycerol, 0.5% protective protein and 0.02% sodium azide, pH 7.3.
Storage:	Store at 4°C short term. Aliquot and store at -20°C long term. Avoid freeze/thaw cycles.
Synonyms:	RHOA; ARH12; ARHA; RHO12; Transforming protein RhoA; Rho cDNA clone 12; h12
Source:	Rabbit

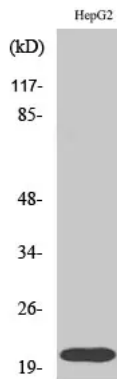
Background:

Rho A is a small G protein of the Rho family. Regulates a signal transduction pathway linking plasma membrane receptors to the assembly of focal adhesions and actin stress fibers.

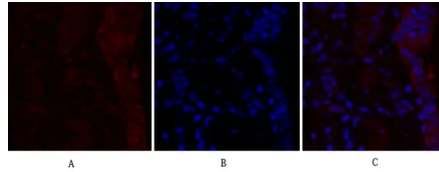
For Research Use Only

IMMUNOLOGICAL SCIENCES

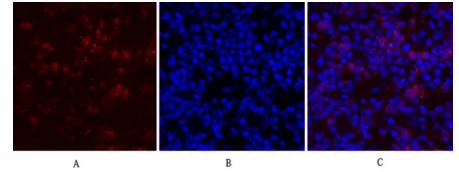
Web-site: <https://immunologicalsciences.com> - E-mail: info@immunologicalsciences.com



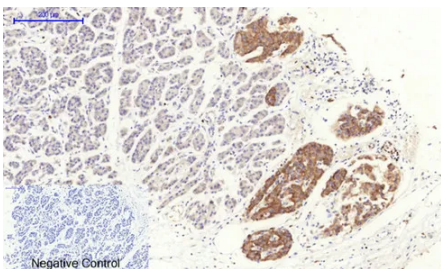
Western blot analysis of RhoA in HepG2 lysates using RhoA antibody.



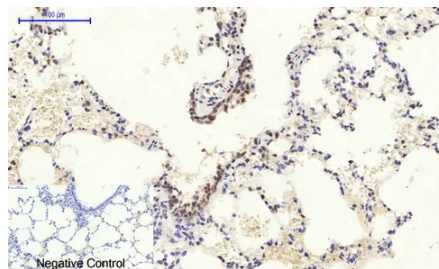
Immunofluorescence analysis of RhoA in rat lung using Rho A antibody (red), and DAPI (blue).



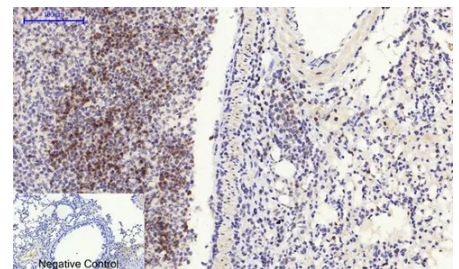
Immunofluorescence analysis of RhoA in mouse lung using Rho A antibody (red), and DAPI (blue)



Immunohistochemistry analysis of paraffin-embedded Human stomach cancer tissue using Rho A antibody. High-pressure and temperature Sodium Citrate pH 6.0 was used for antigen retrieval. Negative control was used by secondary antibody only



Immunohistochemistry analysis of paraffin-embedded rat lung tissue using RhoA antibody. High-pressure and temperature Sodium Citrate pH 6.0 was used for antigen retrieval. Negative control was used by secondary antibody.



Immunohistochemistry analysis of paraffin-embedded mouse lung tissue using Rho A antibody. High-pressure and temperature Sodium Citrate pH 6.0 was used for antigen retrieval. Negative control was used by secondary antibody only.

For Research Use Only

IMMUNOLOGICAL SCIENCES