

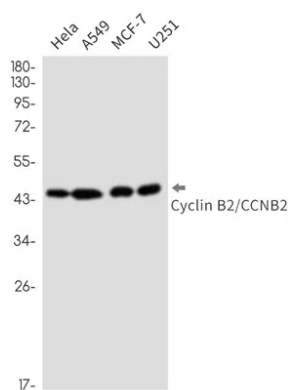


<b>Product name:</b>	Cyclin B2 Rabbit Monoclonal Antibody
<b>Cat number:</b>	MABN87634
<b>Conjugate:</b>	Unconjugated
<b>Size:</b>	100µL
<b>Concentration:</b>	1mg/ml
<b>Host:</b>	Rabbit
<b>Isotype:</b>	IgG
<b>Immunogen:</b>	Recombinant protein of human Cyclin B2/CCNB2
<b>Reactivity:</b>	Human,Mouse,Rat
<b>Applications:</b>	WB 1:500-1:2000,IHC 1:50-1:200,ICC/IF 1:200-1:500,IP 1:50-1:100
<b>Molecular Weight:</b>	45 kDa
<b>Purification:</b>	Affinity purification
<b>Form:</b>	liquid
<b>Buffer:</b>	Supplied in 50mM Tris-Glycine(pH 7.4), 0.15M NaCl, 40% Glycerol, 0.01% sodium azide and 0.05% protective protein. Stable for 12 months from date of receipt.
<b>Storage:</b>	Store at 4°C short term. Aliquot and store at -20°C long term. Avoid freeze/thaw cycles.
<b>Synonyms:</b>	HsT17299
<b>Source:</b>	Rabbit
<b>Background:</b>	Cyclin B2 is a member of the cyclin family, specifically the B-type cyclins. The B-type cyclins, B1 and B2, associate with p34cdc2 and are essential components of the cell cycle regulatory machinery. B1 and B2 differ in their subcellular localization. Cyclin B1 co-localizes with microtubules, whereas cyclin B2 is primarily associated with the Golgi region. Cyclin B2 also binds to transforming growth factor beta RII and thus cyclin B2/cdc2 may play a key role in transforming growth factor beta-mediated cell cycle control. [provided by RefSeq, Jul 2008]

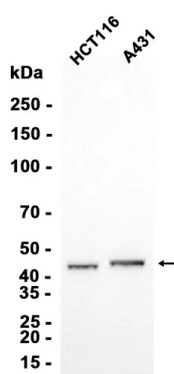
**For Research Use Only**

**IMMUNOLOGICAL SCIENCES**

Web-site: <https://immunologicalsciences.com> - E-mail: [info@immunologicalsciences.com](mailto:info@immunologicalsciences.com)



Western blot detection of Cyclin B2/CCNB2 in HeLa, A549, MCF-7, U251 cell lysates using Cyclin B2/CCNB2 antibody (1:1000 diluted).



Western blot analysis of extracts from HCT116/A431 cells using AMRe87634 at 1:1000.

**For Research Use Only**

**IMMUNOLOGICAL SCIENCES**