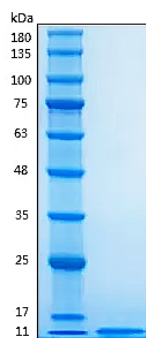


Product name:	Recombinant Human Insulin Protein
Cat number:	GRF03297
Size:	20 ug
Molecular Weight:	5.8 kDa
Purification:	≥ 95 % as determined by SDS-PAGE.
Form:	lyophilized
Storage:	Store at -20°C. Store the lyophilized protein at -20°C to -80 °C up to 1 year from the date of receipt. After reconstitution, the protein solution is stable at -20°C for 3 months, at 2-8°C for up to 1 week.
Synonyms:	INS; Insulin; Cleaved into: Insulin B chain; Insulin A chain
Source:	Yeast
Endotoxin:	≤20 EU/mg of the protein by LAL method.
Formulation:	Lyophilized from a 0.22 µm filtered solution .
Reconstitution:	It is recommended to redissolve in sterile 0.01 M HCl at a concentration of not less than 1mg/mL.
Description:	High quality, high purity and low endotoxin recombinant Recombinant Human Insulin Protein (GRF03297), tested reactivity in Yeast and has been validated in SDS-PAGE. 100% guaranteed.
Background:	INS (Insulin) is a Protein Coding gene. This gene encodes insulin, a peptide hormone that plays a vital role in the regulation of carbohydrate and lipid metabolism. After removal of the precursor signal peptide, proinsulin is post-translationally cleaved into three peptides: the B chain and A chain peptides, which are covalently linked via two disulfide bonds to form insulin, and C-peptide. The binding of insulin to the insulin receptor (INSR) stimulates glucose uptake. Diseases associated with INS include Hyperproinsulinemia and Maturity-Onset Diabetes Of The Young, Type 10. A multitude of mutant alleles with phenotypic effects has been identified, including insulin-dependent diabetes mellitus, permanent neonatal diabetes mellitus, maturity-onset diabetes of the young type 10, and hyperproinsulinemia.

For Research Use Only

IMMUNOLOGICAL SCIENCES

Web-site: <https://immunologicalsciences.com> - E-mail: info@immunologicalsciences.com



Recombinant Human Insulin Protein was determined by SDS-PAGE under reducing conditions with Coomassie Blue.